

***TM 5-6675-309-24P**
TM 08840A-24P/2

TECHNICAL MANUAL

**Unit, Direct Support, General Support
and Depot Maintenance Repair Parts
and Special Tools List
for**

**POWER SUPPLY TEST SET
AN/USM-428
NSN 6675-01-075-4033**

Approved for public release; distribution is unlimited.

*This manual supersedes TM 5-6675-309-24P, dated 20 February 1967.

**HEADQUARTERS, DEPARTMENT OF THE ARMY
HEADQUARTERS, U.S. MARINE CORPS
22 JULY 1992**

TECHNICAL MANUAL

NO. 5-6675-309-24P

**HEADQUARTERS
DEPARTMENT OF THE ARMY
AND HEADQUARTERS U.S. MARINE CORPS
WASHINGTON, D.C., 22 JULY 1992**

**UNIT, DIRECT SUPPORT GENERAL SUPPORT, AND DEPOT MAINTENANCE
REPAIR PARTS AND SPECIAL TOOLS LIST**

**FOR
POWER SUPPLY TEST SET
AN/USM-428
NSN 6675-01-075-4033**

Current as of 3 April 1992

REPORTING ERRORS AND RECOMMENDING IMPROVEMENTS

You can help improve this manual. If you find any mistakes or if you know of a way to improve the procedures, please let us know. Mail your letter or DA Form 2028 (Recommended Changes to Publications and Blank Forms), or DA Form 2028-2 located in the back of this manual directly to: Commander, US Army Troop Support Command, ATTN: AMSTR-MMTS, 4300 Goodfellow Blvd., St. Louis, MO 63120-1798. A reply will be furnished directly to you.

Marine Corps users shall submit NAVMC Form 10772 (Recommended Changes to Technical Publications). Send to: Commanding General, Marine Corps Logistics Base (Code 850), Albany, GA 31704-5000.

Approved for public release; distribution is unlimited.

TABLE OF CONTENTS

		Page	Illus/ Figure
Section I	INTRODUCTION	1	
Section II	REPAIR PARTS LIST	1-1	
Group 01	Test Set, Power Supply		
	Power Supply Test Set AN/USM-428	1-1	1
	Power Supply Test Set Exploded View	2-1	2
	Instrument Case Assembly	3-1	3
	Electronic Component Assembly No. 1	4-1	4
	Electronic Component Assembly No. 2	5-1	5
	Current Limiter Component Assembly	6-1	6

* This manual supersedes TM 5-6675-309-24P/ TM 08840A-24P/2, dated 20 February 1987.

			Illus/ Page Figure
Group 02	Cable Power		
	Cable Assembly Set Exploded View	7-1	7
Group 03	Case		
	Power Supply Test Set Case CY-7564/USM428	8-1	8
	Power Supply Test Set Accessory Case CY-7610/USM428	9-1	9
Section III	SPECIAL TOOLS LIST (Not Applicable)		
Section IV	CROSS REFERENCE INDEXES	1-1	
	National Stock Number Index	1-1	
	Part Number Index	1-3	
	Figure and Item Number Index	1-13	

UNIT, DIRECT SUPPORT, GENERAL SUPPORT, AND DEPOT MAINTENANCE REPAIR PARTS AND SPECIAL TOOLS LIST

Section I. INTRODUCTION

1. **SCOPE.** This RPSTL lists and authorizes spares and repair parts; special tools; special test, measurement, and diagnostic equipment (TMDE); and other special support equipment required for performance of unit, direct support, and general support maintenance of the Power Supply Test Set. It authorizes the requisitioning, issue, and disposition of spares, repair parts and special tools as indicated by the source, maintenance and recoverability (SMR) codes.

2. **GENERAL.** In addition to this section, Introduction, this Repair Parts and Special Tools List is divided into the following sections:

a. **Section II.** Repair Parts List. A list of spares and repair parts authorized by this RPSTL for use in the performance of maintenance. This list also includes parts which must be removed for replacement of the authorized parts. Parts lists are composed of functional groups in ascending alphanumeric sequence, with the parts in each group listed in ascending figure and item number sequence. Bulk materials are listed in item name sequence. Repair parts kits are listed separately in their own functional group within Section II. Repair parts for repairable special tools are also listed in this section. Items are shown in the associated illustration(s)/figure(s).

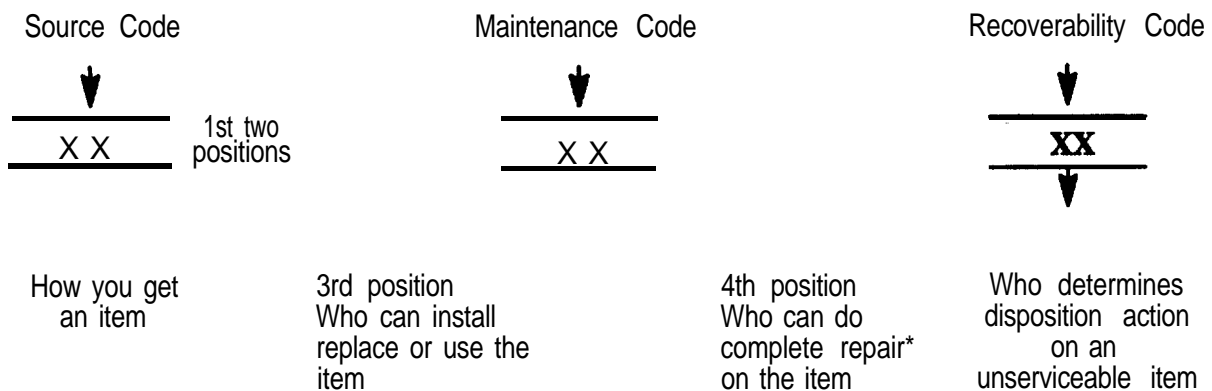
b. **Section III.** Special Tools List. A list of special tools, special TMDE, and other special support equipment authorized by this RPSTL (as indicated by Basis of Issue (BOI) information in DESCRIPTION AND USABLE ON CODE column) for the performance of maintenance.

c. **Section IV.** Cross-references Indexes. A list, in National Item Identification Number (NIIN) sequence, of all National stock numbered items appearing in the listing, followed by a list in alphanumeric sequence of all part numbers appearing in the listings. National stock numbers and part numbers are cross referenced to each illustration figure and item number appearance. The figure and item number index lists figure and item number in alphanumeric sequence and cross references NSN, CAGEC and part number.

3. **EXPLANATION OF COLUMNS (SECTIONS II AND III).**

a. **ITEM NO. (Column (1)).** Indicates the number used to identify items called out in the illustration.

b. **SMR Code (Column (2)).** The Source, Maintenance, and Recoverability (SMR) code is a S-position code containing supply/requisitioning information, maintenance category authorization criteria, and disposition instruction, as shown in the following breakout:



*Complete Repair: Maintenance capacity, capability, and authority to perform all corrective maintenance tasks of the "Repair" function in a use/user environment in order to restore serviceability to a failed item.

(1) Source Code. The source code tells you how to get an item needed for maintenance, repair, or overhaul of an end item/equipment. Explanations of source codes follows:

Code	Explanation
PA PB PC** PD PE PF PG	<p>Stocked items: use the applicable NSN to requested/requisition items with these source codes. They are authorized to the category indicated by the code entered in the 3rd position of the SMR code.</p> <p>NOTE: Items coded PC are subject to deterioration.</p>
KD KF KB	<p>Items with these codes are not to be requested/requisitioned individually. They are part of a kit which is authorized to the maintenance category indicated in the 3rd position of the SMR code. The complete kit must be requisitioned and applied.</p>
MO - (Made at org/AVUM Level) MP - (Made at DS/AVUM Level) MH - (Made at GS Level) ML - (Made at Specialized Repair Activity (SRA)) MD - (Made at Depot)	<p>Items with these codes are not to be requested/requisitioned individually. They must be made from bulk material which is identified by the part number in the DESCRIPTION and USABLE ON CODE (UOC) column and listed in the Bulk Material group of the repair parts list in this RPSTL. If the item is authorized to you by the 3rd position code of the SMR code, but the source code indicates it is made at a higher level, order the item from the higher level of maintenance.</p>
AO - (Assembled by org/AVUM Level) AF - (Assembled by DS/AVUM Level) AH - (Assembled by GS Category) AL - (Assembled by SRA) AD - (Assembled by Depot)	<p>Items with these codes are not to be requested/requisitioned individually. The parts that make up the assembled item must be requisitioned or fabricated and assembled at the level of maintenance indicated by the source code. If the 3rd position code of the SMR code authorizes you to replace the item, but the source code indicates the items are assembled at a higher level, order the item from the higher level of maintenance.</p>
XA-	Do not requisition "XA"-coded item. Order its next higher assembly. (Also, refer to the NOTE below.)
XB-	If an "XB" item is not available from salvage, order it using the CAGEC and part number given.
x c -	Installation drawing, diagram, instruction sheet, field service drawing, that is identified by Reciprocating Compressor manufacturer's part number.
XD-	Item is not stocked. Order an "XD"-coded item through normal supply channels using the CAGEC and part number given if no NSN is available.

NOTE

Cannibalization or controlled exchange, when authorized, may be used as a source of supply for items with the above source codes, except for those source coded "XA" or those aircraft support items restricted by requirements of AR 750-1.

(2) Maintenance Code. Maintenance codes tell you the level(s) of maintenance authorized to USE and REPAIR support items. The maintenance codes are entered in the third and fourth positions of the SMR code as follows:

(a) The maintenance code entered in the third position tells you the lowest maintenance level authorized to remove, replace, and use an item. The maintenance code entered in the third position will indicate authorization to one of the following levels of maintenance.

Code	Application/Explanation
C -	Crew or operator maintenance done with unit or aviation unit maintenance.
O -	Unit or aviation unit category can remove, replace, and use the item.
F -	Direct support or aviation intermediate level can remove, replace, and use the item.
H -	General support level can remove, replace, and use the item.
L -	Specialized repair activity can remove, replace, and use the item.
D -	Depot level can remove, replace, and use the item.

(b) The maintenance code entered in the fourth position tells whether or not the item is to be repaired and identifies the lowest maintenance level with the capability to do complete repair (i.e., perform all authorized repair functions.) **NOTE:** Some limited repair may be done on the item at a lower level of maintenance, if authorized by the Maintenance Allocation Chart (MAC) and SMR codes. This position will contain one of the following maintenance codes.

Code	Application/Explanation
O -	Unit or (aviation unit) is the lowest level that can do complete repair of the item.
F -	Direct support or aviation intermediate is the lowest level that can do complete repair of the item.
H -	General Support is the lowest level that can do complete repair of the item.
L -	Specialized repair activity is the lowest level that can do complete repair of the item.
D -	Depot is the lowest level that can do complete repair of the item.
Z -	Nonreparable. No repair is authorized.
B -	No repair is authorized. (No parts or special tools are authorized for the maintenance of a "B" coded item). However, the item may be reconditioned by adjusting, lubricating, etc., at the user level.

(3) Recoverability Code. Recoverability codes are assigned to items to indicate the disposition action on unserviceable items. The recoverability code is entered in the fifth position of the SMR Code as follows:

Recoverability

Codes

Application/Explanation

- Z - Nonreparable item. When unserviceable, condemn and dispose of the item at the level of maintenance shown in 3d position of SMR Code.
- O - Reparable item. When not economically reparable, condemn and dispose of the item unit or aviation unit level
- F - Reparable item. When uneconomically reparable, condemn and dispose of the item at the direct support or aviation intermediate level
- H - Reparable item. When uneconomically reparable, condemn and dispose of the item at the general support level.
- D - Reparable item. When beyond lower level repair capability, return to depot. Condemnation and disposal of item not authorized below depot level.
- L - Reparable item. Condemnation and disposal not authorized below specialized repair activity (SRA).
- A - Item requires special handling or condemnation procedures because of specific reasons (e.g., precious metal content, high dollar value, critical material, or hazardous material). Refer to appropriate manuals/directives for specific instructions.

c. CAGEC (Column (3)). The Commercial and Government Entity Code (CAGEC) is a 5-digit numeric code which is used to identify the manufacturer, distributor, or Government agency, etc., that supplies the item.

d. PART NUMBER (Column (4)). Indicates the primary number used by the manufacturer, (individual, company, firm, corporation, or Government activity), which controls the design and characteristics of the item by means of its engineering drawings, specifications standards, and inspection requirements to identify an item or range of items.

NOTE

When you use an NSN to requisition an item, the item you receive may have a different part number from the part ordered.

e. DESCRIPTION AND USABLE ON CODE (UOC) (Column (5)). This column includes the following information:

- (1) The Federal item name and, when required, a minimum description to identify the item.
- (2) The physical security classification of the item is indicated by the parenthetical entry, e.g., PhySec C1 - Confidential, PhySec C1 (S) - Secret, PhySec C1 (T) - Top Secret.
- (3) Items that are included in kits and sets are listed below the name of the kit or set.
- (4) Spare/repair parts that make up an assembled item are listed immediately following the assembled item line entry.
- (5) Part numbers for bulk materials are referenced in this column in the line item entry for the item to be manufactured/fabricated.
- (6) When the item is not used with all serial numbers of the same model, the effective serial numbers are shown on the last line(s) of the description (before UOC).
- (7) The usable on code, when applicable (see paragraph 5, Special Information).

(8) In the Special Tools List section, the basis of issue (BOI) appears as the last line(s) in the entry for each special tool, special TMDE, and other special support equipment. When density of equipments supported exceeds density spread indicated in the basis of issue, the total authorization is increased proportionately.

(9) The statement "END OF FIGURE" appears just below the last item description in Column 5 for a given figure in both Section II and Section III.

(10) The indenture, shown as dots appearing before the repair part, indicates that the item is a repair part of the next higher assembly.

f. **QTY (Column (6)).** The QTY (quantity per figure column) indicates the quantity of the item used in the breakout shown on the Illustration figure, which is prepared for a functional group, subfunctional group, or an assembly. A "V" appearing in this column in lieu of a quantity indicates that the quantity is variable and may vary from application to application.

4. EXPLANATION OF COLUMNS (SECTION IV).

a. NATIONAL STOCK NUMBER (NSN) INDEX.

(1) **STOCK NUMBER column.** This column lists the NSN by National item identification number (NIIN) sequence. The NIIN consists of the last nine digits of the NSN, i.e.

NSN
5305-01-574-1467
NIIN

When using this column to locate an item, ignore the first 4 digits of the NSN. However, the complete NSN should be used when ordering items by stock number.

(2) **FIG. column.** This column lists the number of the figure where the item is identified/located. The figures are in numerical order in Section II and Section III.

(3) **ITEM column.** The item number identifies the item associated with the figure listed in the adjacent FIG. column. This item is also identified by the NSN listed on the same line.

b. **PART NUMBER INDEX.** Part numbers in this index are listed by part number in ascending alpha-numeric sequence (i.e., vertical arrangement of letter and number combination which places the first letter or digit of each group in order A through Z, followed by the numbers 0 through 9 and each following letter or digit in like order).

(1) **CAGEC column.** The Commercial and Government Entity Code (CAGEC) is a 5-digit numeric code used to identify the manufacturer, distributor, or Government agency, etc., that supplies the item.

(2) **PART NUMBER column.** Indicates the primary number used by the manufacturer (individual, firm, corporation, or Government activity), which controls the design and characteristics of the item by means of its engineering drawings, specifications standards, and inspection requirements to identify an item or range of items.

(3) **STOCK NUMBER column.** This column lists the NSN for the associated part number and manufacturer identified in the PART NUMBER and CAGEC columns to the left.

(4) **FIG. column.** This column lists the number of the figure where the item is identified/located in Sections II and III.

(5) **ITEM column.** The item number is that number assigned to the item as it appears in the figure referenced in adjacent figure number column.

c. FIGURE AND ITEM NUMBER INDEX.

(1) **FIG. column.** This column lists the number of the figure where the item is identified/located in Section II and III.

(2) **ITEM column.** The item number is that number assigned to the item as it appears in the figure referenced in the adjacent figure number column.

(3) **STOCK NUMBER column.** This column lists the NSN for the item.

(4) **CAGEC column.** The Commercial and Government Entity Code (CAGEC) is a S-digit numeric code used to identify the manufacturer, distributor, or Government agency, etc., that supplies the item.

(5) **PART NUMBER column.** Indicates the primary number used by the manufacturer (individual, firm, corporation, or Government activity), which controls the design and characteristics of the item by means of its engineering drawings, specifications standards, and inspection requirements to identify an item or range of items.

5. SPECIAL INFORMATION.

a. **USABLE ON CODE.** The usable on code appears in the lower corner of the Description column heading. Usable on codes are shown as "UOC:.." In the Description Column justified left) on the last line applicable item description/nomenclature. Uncoded items are applicable to all models.

b. **ASSOCIATED PUBLICATIONS.** The publications listed below pertain to the Power Supply, Test Set, AN/USM-428 and its components.

<u>Publication</u>	<u>Short Title</u>
TM 5-6675-309-14	Power Supply, Test Set

6. HOW TO LOCATE REPAIR PARTS.

a. When National Stock Number or Part Number Is NOT Known.

(1) **First.** Using the table of contents, determine the assembly group or subassembly group to which the item belongs. This is necessary since figures are prepared for assembly groups and subassembly groups, and listings are divided into the same groups.

(2) **Second.** Find the figure covering the assembly group or subassembly group to which the item belongs.

(3) **Third.** Identify the item on the figure and note the item number.

(4) **Fourth.** Refer to the Repair Parts List for the figure to find the part number for the item number noted on the figure.

(5) **Fifth.** Refer to the Part Number Index to find the NSN, if assigned.

b. When National Stock Number or Part Number is Known.

(1) First. Using the Index of National Stock Numbers and Part Numbers, find the pertinent National Stock Number or Part Number. The NSN index is in National Item Identification Number (NIIN) sequence (see c-4a.(1)). The part numbers in the Part Number index are listed in ascending alphanumeric sequence (see paragraph c-4.b). Both indexes cross-reference you to the illustration figure and item number of the item you are looking for.

(2) Second. After finding the figure and item number, verify that the item is the one you are looking for, then locate the item number in the repair parts list for the figure.

7. ABBREVIATIONS. Abbreviations used in this manual are listed in MIL-STD-12.

ARMY TM 5-6675-309-24P
MARINE CORPS TM 08840A-24P/2

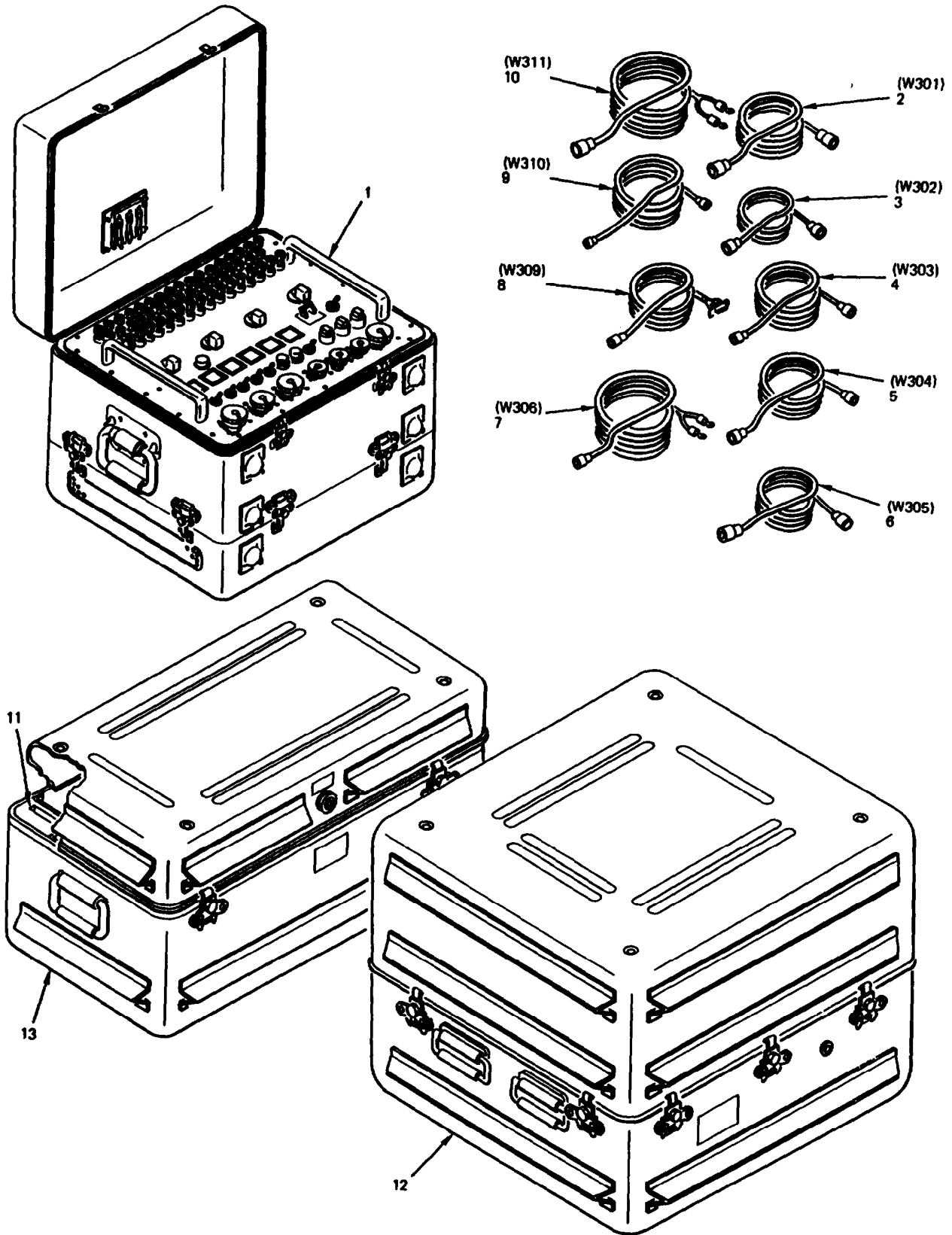


Figure 1. Power Supply Test Set AN/USM-428

SECTION II			TM5-6675-309-24P			
(1)	(2)	(3)	(4)		(5)	(6)
ITEM	SMR		PART			
NO	CODE	CAGEC	NUMBER		DESCRIPTION AND USABLE ON CODES(UOC)	QTY
					GROUP 01 TEST SET, POWER SUPPLY	
					FIG. 1 POWER SUPPLY TEST SET AN/USM-428	
1	PAHDD	06481	877420-4		POWER SUPPLY-TEST S SEE FIG 2 FOR BREAKDOWN	1
2	PAHHH	06481	875769-1		CABLE ASSEMBLY SEE FIG 7 FOR BREAKDOWN	1
3	PAHHH	06481	875769-2		CABLE ASSEMBLY SEE FIG 7 FOR BREAKDOWN	1
4	PAHHH	06481	875769-3		CABLE ASSEMBLY SEE FIG 7 FOR BREAKDOWN	1
5	PAHHH	06481	875769-4		CABLE ASSEMBLY SEE FIG 7 FOR BREAKDOWN	1
6	PAHHH	06481	875769-5		CABLE ASSEMBLY SEE FIG 7 FOR BREAKDOWN	1
7	PAHHH	06481	875769-6		CABLE ASSEMBLY SEE FIG 7 FOR BREAKDOWN	1
8	PAHHH	06481	875769-7		CABLE ASSEMBLY SEE FIG 7 FOR BREAKDOWN	1
9	PAHHH	06481	875769-8		CABLE ASSEMBLY SEE FIG 7 FOR BREAKDOWN	1
10	PAHHH	06481	875769-9		CABLE ASSEMBLY SEE FIG 7 FOR BREAKDOWN	1
11	PAZZZ	06481	877490-1		EXTRACTOR,ELECTRICA	1
12	PDHHH	06481	877425-1		CASE, POWER SUPPLY SEE FIG 8 FOR BREAKDOWN	1
13	XDHHH	06481	877429-1		CASE ACCESSORIES SEE FIG 9 FOR BREAKDOWN	1

END OF FIGURE

ARMY TM 5-6675-309-24P
MARINE CORPS TM 08840A-24P/2

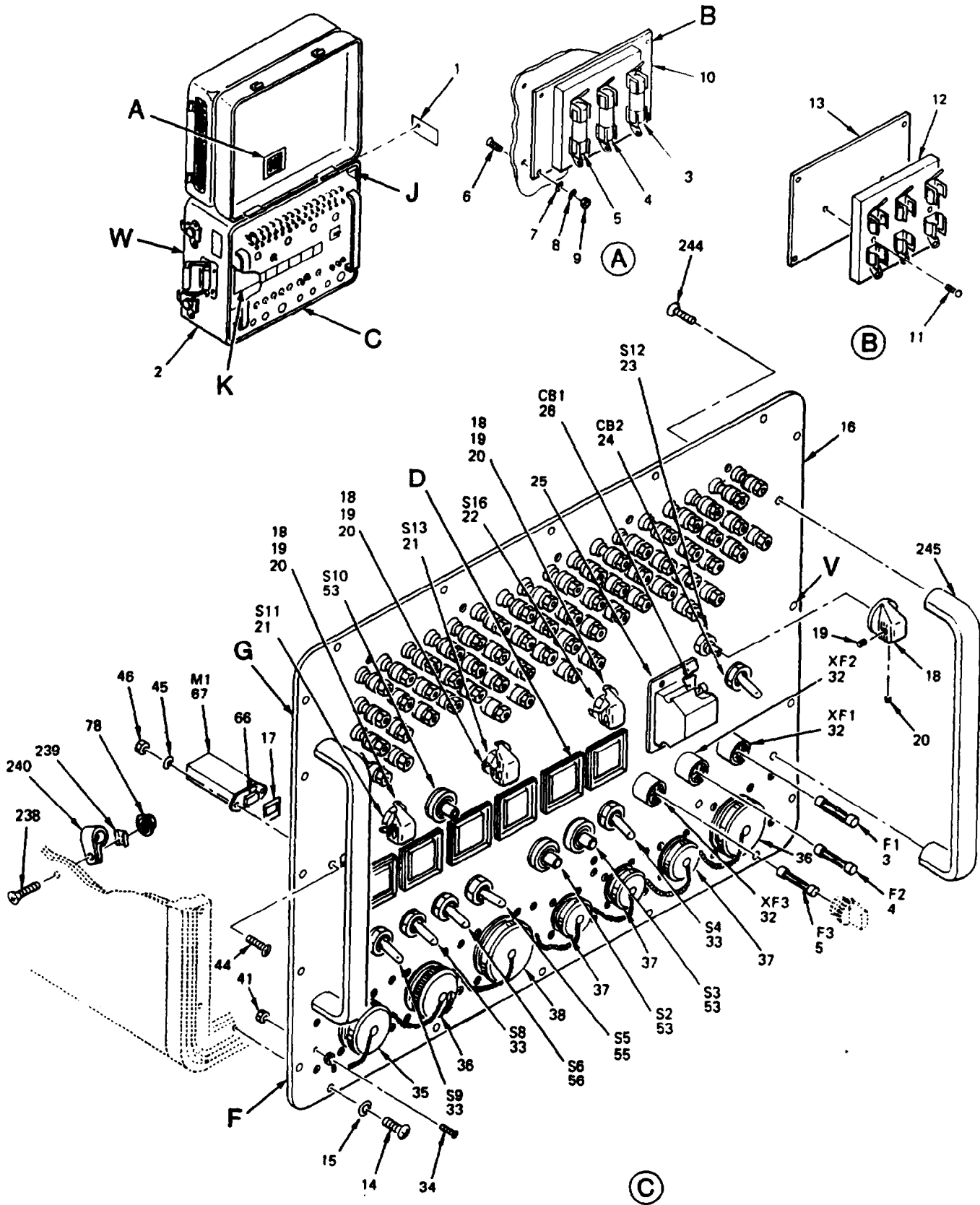
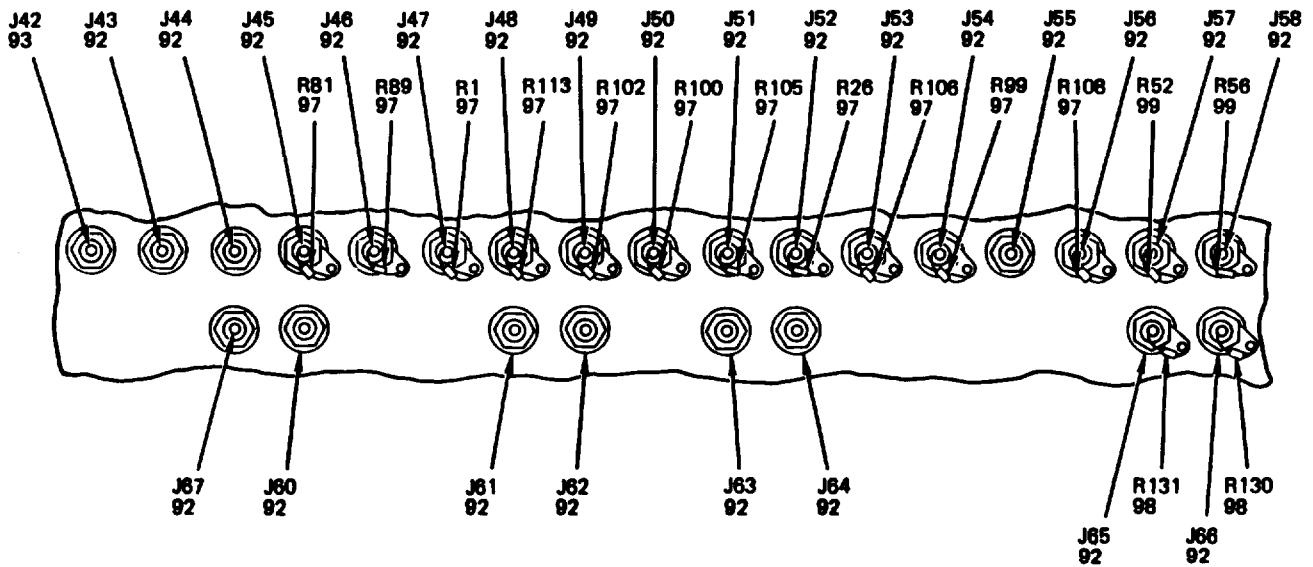
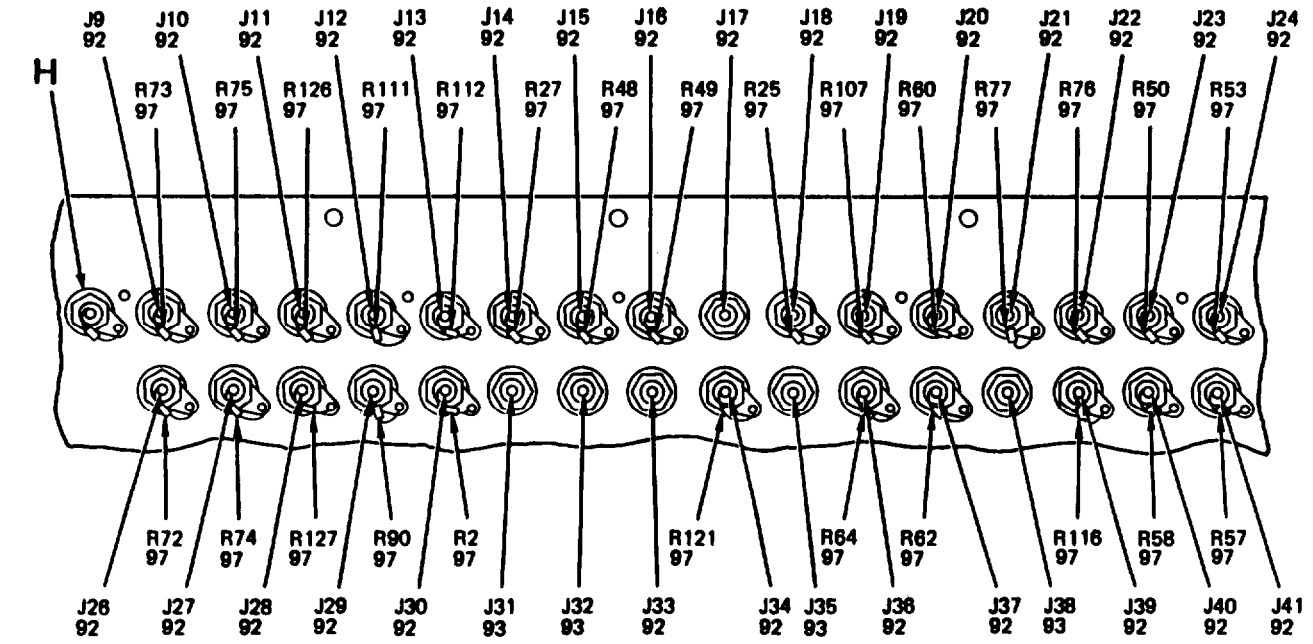


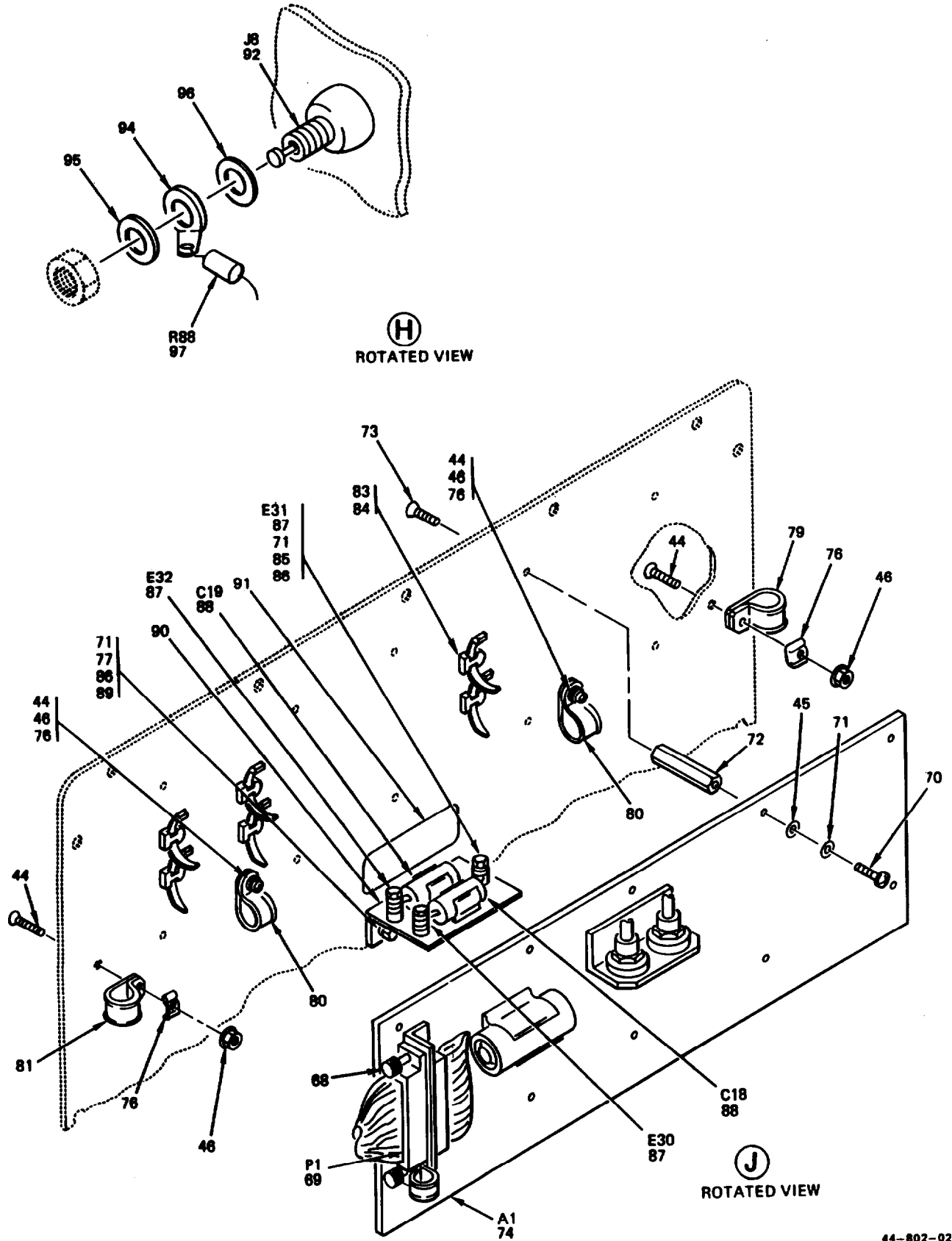
Figure 2. Power Supply Test Set Exploded View (Sheet 1 of 9)



Ⓒ
ROTATED VIEW

Figure 2. Power Supply Test Set Exploded View (Sheet 3 of 9)

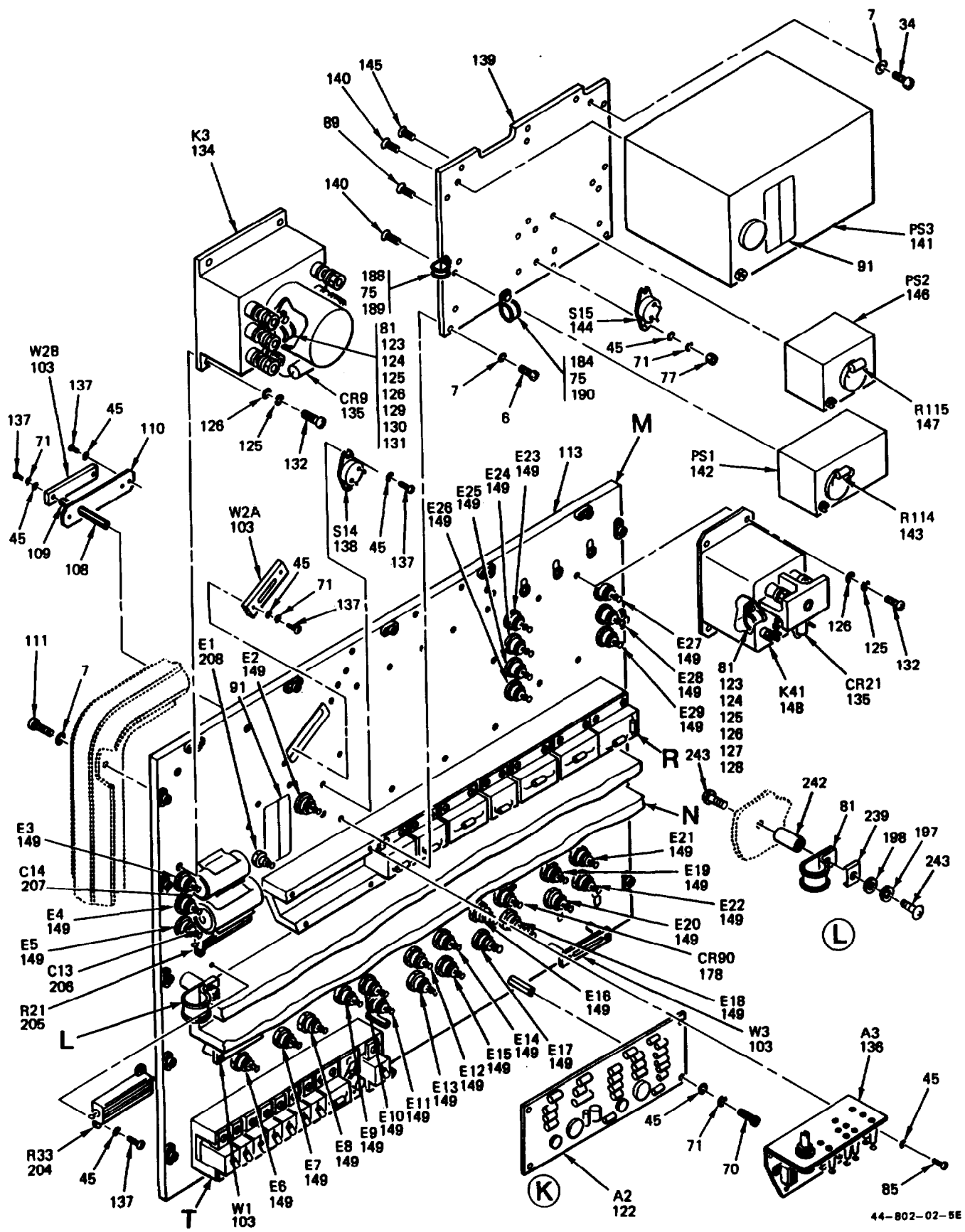
ARMY TM 5-6675-309-24P
MARINE CORPS TM 08840A-24P/2



44-802-02-4D

Figure 2. Power Supply Test Set Exploded View (Sheet 4 of 9)

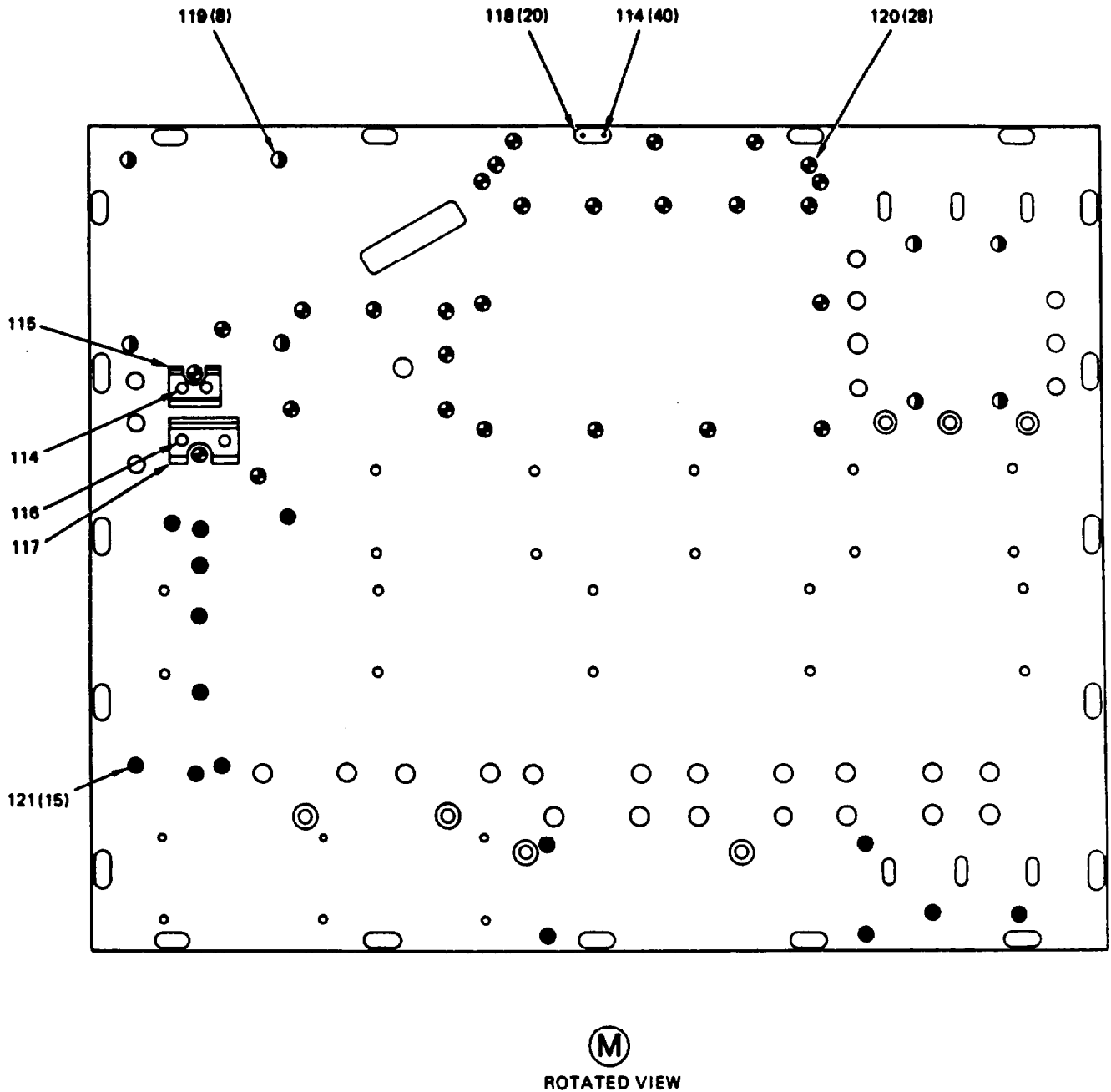
ARMY TM 5-6675-309-24P
MARINE CORPS TM 08840A-24P/2



44-802-02-5E

Figure 2. Power Supply Test Set Exploded View (Sheet 5 of 9)

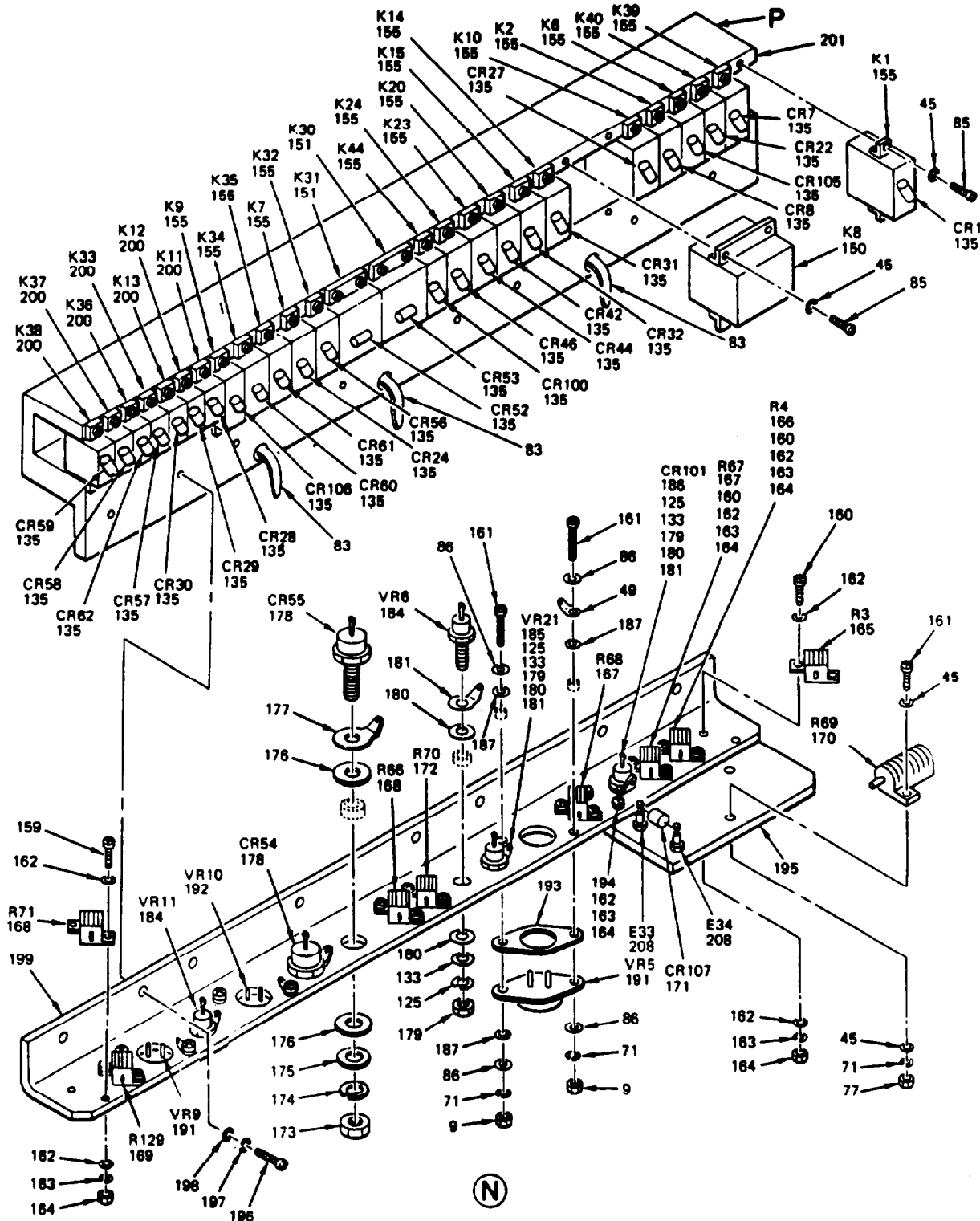
ARMY TM 5-6675-309-24P
MARINE CORPS TM 08840A-24P/2



44-802-02-6C

Figure 2. Power Supply Test Set Exploded View (Sheet 6 of 9)

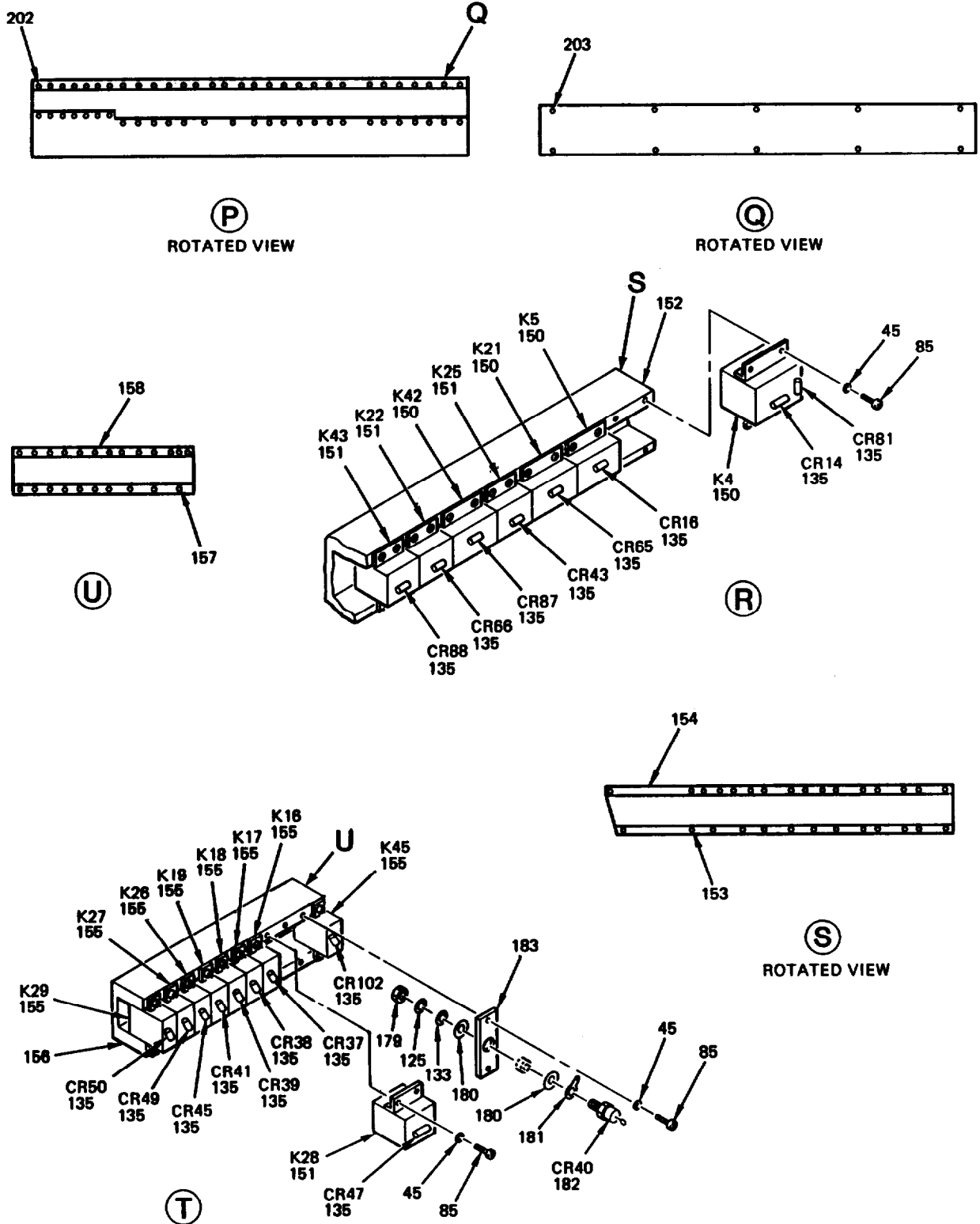
ARMY TM 5-6675-309-24P
MARINE CORPS TM 08840A-24P/2



44-802-02-7C

Figure 2. Power Supply Test Set Exploded View (Sheet 7 of 9)

ARMY TM 5-6675-309-24P
MARINE CORPS TM 08840A-24P/2



44-802-02-8D

Figure 2. Power Supply Test Set Exploded View (Sheet 8 of 9)

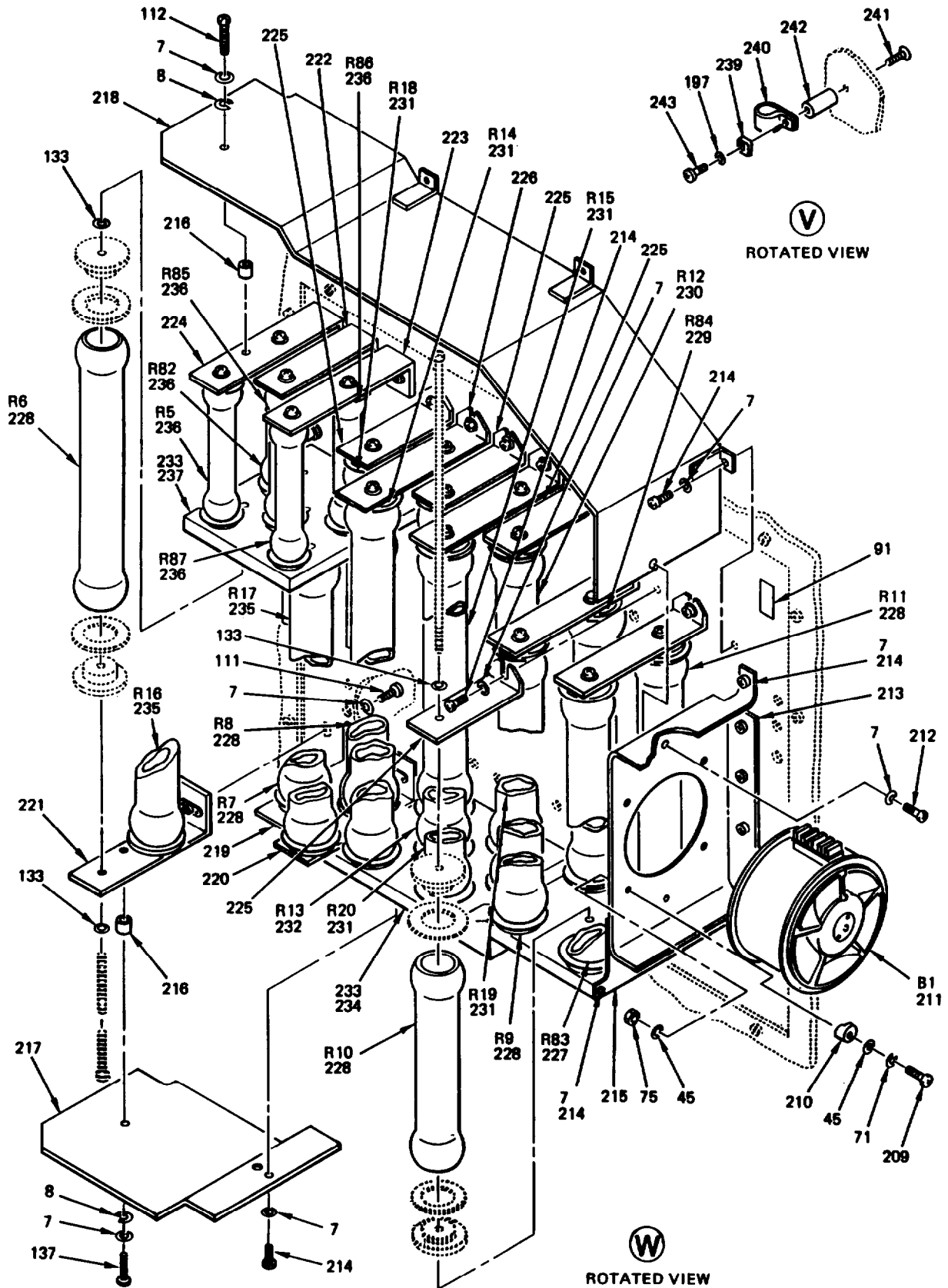


Figure 2. Power Supply Test Set Exploded View (Sheet 9 of 9)

SECTION II			TM 5-6675-309-24P			
(1)	(2)	(3)	(4)		(5)	(6)
ITEM	SMR	CAGEC	PART			
NO	CODE		NUMBER		DESCRIPTION AND USABLE ON CODES(UOC)	QTY
					GROUP 01 TEST SET, POWER SUPPLY	
					FIG. 2 POWER SUPPLY TEST SET EXPLODED VIEW	
1	XDHZZ	06481	877402-6		.PLATE,IDENT	1
2	XDHHH	98376	D41356-4		.CASE,INSTRUMENT SEE FIG 3 FOR BREAKDOWN	1
3	PAHZZ	81349	F02B250V1-4A		.FUSE,CARTRIDGE	2
4	PAHZZ	81349	F02B250V1-2A		.FUSE,CARTRIDGE	2
5	PAHZZ	81349	F03A250V8A		.FUSE,CARTRIDGE	2
6	XDHZZ	96906	MS24693C28		.SCREW,MACHINE	10
7	XDHZO	96906	MS15795-806		.WASHER,FLAT	64
8	XDHZZ	96906	MS35338-136		.WASHER,LOCK	15
9	XDHZZ	96906	MS35649-264		.NUT,PLAIN,HEXAGON	4
10	XDHHH	06481	875774-2		.FUSEHOLDER SUBASSY	1
11	XDHZZ	96906	MS24693C26		..SCREW,MACHINE	2
12	XDHZO	81349	FH23CM		.. FUSEHOLDER,BLOCK	1
13	XDHZZ	06481	875775-1		.. PLATE,FUSE BLOCK	1
14	XDHZZ	96906	MS51958-65B		.SCREW,MACHINE	20
15	XDHZZ	96906	MS15795-808B		.WASHER,FLAT	20
16	XDHHH	06481	877713-3		. PANEL,FRONT	1
17	XDHZZ	06481	877713-98		.. SEAL	1
18	XDHZZ	15084	GP-202-17		. KNOB	4
19	XDHZZ	80205	NAS1081C08A2L		.. SETSCREW	1
20	XDHZZ	80205	NAS1081C08A14L		.. SETSCREW	1
21	PAHZZ	81349	M3786/4-5120		.SWITCH,ROTARY	2
22	PAHZZ	81349	M3786/4-5183		.SWITCH,ROTARY	1
23	PAHZZ	81349	M3786/4-5124		.SWITCH,ROTARY	1
24	PAHZZ	81349	M39019/01-255		.CIRCUIT BREAKER	1
25	PAHZZ	81349	M5423/14-06		.BOOT,DUST AND MOIST	1
26	PAHZZ	81541	205-11-4349-2		.CIRCUIT BREAKER	1
27	PAHZZ	96182	2763-503		.SWITCH,PUSH	1
28	PAHZZ	96182	2849-131		.LENS,LIGHT	1
29	PAHZZ	71744	CM387-203		.LAMP,INCANDESCENT	20
30	PAHZZ	81349	M22885/13-02		.BOOT,DUST AND MOIST	6
31	PAHZZ	96182	1OHA2C5N4(R)R1V1 2OVERTEMP		. LIGHT,INDICATOR	1
32	XDHZZ	81349	FHL18G1-2		. FUSEHOLDER	3
33	PAHZZ	96906	MS27718-23-1		.SWITCH,TOGGLE	3
34	XDHZZ	96906	MS51957-28		.SCREW,MACHINE	16
35	XDHZZ	96906	MS27511B22C		.COVER,ELECTRICAL CO	1
36	XDHZZ	96906	MS27511B24C		.COVER,ELECTRICAL CO	2
37	XDHZZ	96906	MS27511B16C		.COVER,ELECTRICAL CO	3
38	XDHZZ	96906	MS27502B25C		.COVER,ELECTRICAL CO	1
39	XDHZZ	96906	MS24693C27		.SCREW,MACHINE	34
40	XDHZZ	80205	NAS620C6		.WASHER,FLAT	19
41	XDHZZ	80205	NAS1291C06M		.NUT,SELF-LOCKING,EX	16
42	XDHZZ	96906	MS27508E24B24PB		.CONNECTOR,RCPT,ELEC	1
43	XDHZZ	96906	MS27488-16		.PLUG,END SEAL,ELECT	5
44	XDHZZ	96906	MS24693C5		.SCREW,MACHINE	23
45	XDHZZ	80205	NAS620C4		.WASHER,FLAT	190

SECTION II			TM 5-6675-309-24P		
(1)	(2)	(3)	(4)	(5)	(6)
ITEM	SMR		PART		
NO	CODE	CAGEC	NUMBER	DESCRIPTION AND USABLE ON CODES(UOC)	QTY
46	XDHZZ	80205	NAS1291C04M	.NUT,SELF-LOCKING,EX	23
47	XDHZZ	96906	MS27508E16B6P	.CONNECTOR,RCPT,ELEC	1
48	XDHZZ	96906	MS27488-12	.PLUG,END SEAL,ELECT	3
49	XDHZZ	78189	2905-04-OOCOPPER	.TERMINAL,LUG	7
50	XDHZZ	96906	MS27508E16B35SD	.CONNECTOR,RCPT,ELEC	1
51	XDHZZ	96906	MS27488-22	. PLUG,END SEAL,ELECT	27
52	XDHZZ	96906	MS27508E16B35PC	.CONNECTOR,RCPT,ELEC	1
53	PAHZZ	96906	MS27903-1	.SWITCH,PUSH	3
54	XDHZZ	96906	MS27656T25B19S	.CONNECTOR,RCPT,ELEC	1
55	PAHZZ	96906	MS27718-27-1	.SWITCH,TOGGLE	1
56	PAHZZ	96906	MS27718-26-1	.SWITCH,TOGGLE	1
57	XDHZZ	96906	MS27508E24B24S	.CONNECTOR,RCPT,ELEC	1
58	XDHZZ	96906	MS27508E22B21PB	.CONNECTOR,RCPT,ELEC	1
59	PAHZZ	96182	2763-502	.SWITCH,PUSH	1
60	PAHZZ	81349	JANTXV1N5416	.SEMICONDUCTOR DEVIC	1
61	XDHZZ	96182	2849-142	.LENS, LIGHT	1
62	PAHZZ	96182	10HA2C6N5(WW)R1V	. LIGHT,INDICATOR	1
			16PS ON/COMP PS-		
63	PAHZZ	96182	10HA2C6N5(GG)R1V	. LIGHT,INDICATOR	1
			16CHARGE/BATTERY		
64	PAHZZ	96182	2763-501	. SWITCH,PUSH	1
65	PAHZZ	96182	2849-141	.LENS,LIGHT	1
66	XDHZZ	96906	MS3345-2	. FLANGE MOUNTING	1
67	PAHZZ	81349	M7793/5-002	.METER,TIME TOTALIZ	1
68	XDHZZ	71468	D110550	.JACKSCREW ASSY	1
69	XDHZZ	81349	M24308/2-15	.CONNECTOR,RCPT,ELEC	1
70	XDHZZ	96906	MS51957-14	.SCREW,MACHINE	26
71	XDHZZ	96906	MS35338-135	.WASHER,LOCK	59
72	XDHZZ	80205	NAS1786C04-21	.POST,ELEC-MECH EQPT	10
73	XDHZZ	96906	MS24693C3	.SCREW,MACHINE	30
74	PAHDD	06481	875925-1	.ELECTRONIC COMPONEN SEE FIG 4 FOR BREAKDOWN	1
75	XDHZZ	52316	KP9950-9C	.WASHER,SADDLE	6
76	XDHZZ	52316	KP9950-8C	.WASHER,SADDLE	5
77	XDHZZ	96906	MS35649-244	.NUT,PLAIN,HEXAGON	16
78	XDHZZ	80205	NAS1291C08M	.NUT,SELF-LOCKING,EX	1
79	XDHZZ	80205	NAS1397R6B	.CLAMP,LOOP	1
80	XDDZZ	80205	NAS1397R7B	.CLAMP,LOOP	3
81	XDHZZ	80205	NAS1397R10B	.CLAMP,LOOP	5
82	XDHZZ	80205	NAS1397R12B	.CLAMP,LOOP	3
83	XDHZZ	96906	MS3367-4-9	.STRAP,TIEDOWN,ELECT	9
84	XDHZZ	09036	2969-3	.PLATE,CABLE TIEDOWN	6
85	XDHZZ	96906	MS51957-12	.SCREW,MACHINE	106
86	XDHZZ	96906	MS15795-804	.WASHER,FLAT	17
87	XDHZZ	88245	1481A-4-11.2	.TERMINAL,STUD	3
88	PAHZZ	81349	M83421/01-5197S	.CAPACITOR,FIXED,MET	2
89	XDHZZ	96906	MS24693C4	.SCREK,MACHINE	4
90	XDHZZ	06481	877424-2	.BRACKET,CAPACITOR	1
91	XDHZZ	06481	790035-1	.PLATE,INSTRUCTION	4
92	XDHZZ	83330	1514-102	.POST, BINDING, ELECTR	53
93	XDHZZ	83330	1514-103	.POST, BINDING, ELECTR	5
94	XDHZZ	96906	MS35431-9	.TERMINAL,LUG	48

SECTION II			TM 5-6675-309-24P			
(1)	(2)	(3)	(4)		(5)	(6)
ITEM NO	SMR CODE	CAGEC	PART NUMBER		DESCRIPTION AND USABLE ON CODES(UOC)	QTY
95	XDHZZ	80205	NAS549L416		. INSULATOR,WASHER	48
96	XDHZZ	86928	A363-20-54		.WASHER,SHOULDERED	48
97	PAHZZ	81349	RCR20G222JS		. RESISTOR,FIXED,COMP	38
98	PAHZZ	81349	RCR20G682JS		. RESISTOR,FIXED,COMP	2
99	PAHZZ	81349	RCR20G563JS		.RESISTOR,FIXED,COMP	2
100	XDHZZ	96906	MS51957-20		.SCREW,MACHINE	8
101	XDHZZ	80205	NAS43DDO-26		.SPACER,SLEEVE	8
102	XDHZZ	80205	NAS1786C04-12		.POST,ELEC-MECH EQPT	2
103	XDHZZ	06481	875674-2		. BUS	15
104	XDHZZ	27494	GM-3449-39G-C1-C		. INSULATOR,STANDOFF	8
105	XDHZZ	27494	GM-3449-17-C1-C1		. INSULATOR,STANDOFF	10
106	XDHZZ	06481	875768-1		. BUS	2
107	XDHZZ	06481	875767-2		.STANDOFF	1
108	XDHZZ	80205	NAS1786C04-16		.POST,ELEC-MECH EQPT	2
109	XDHZZ	80205	NAS1829C3C08		.STUD,EXTENSION	6
110	XDHZZ	06481	875789-1		.PLATE,BUS BAR	1
111	XDHZZ	96906	MS51957-31		.SCREW,MACHINE	26
112	XDHZZ	96906	MS51957-26		.SCREW,MACHINE	4
113	XDHHH	06481	875765-1		.PLATE,MOUNTING	1
114	XDHZZ	96906	MS20426AD3-7		.. RIVET,SOLID	42
115	XDHZZ	81349	M24066/2-029		.. CLIP,SPRINGTENSION	1
116	XDHZZ	96906	MS20426AD4-7		.. RIVET,SOLID	2
117	XDHZZ	81349	M24066/2-032		.. CLIP,SPRING TENSION	1
118	XDHZZ	96906	MS21076L06		.. NUT,SELF-LOCKING,PL	20
119	XDHZZ	96906	MS21208F1-10		.. INSERT,SCREW THREAD	8
120	XDHZZ	96906	MS21209C0615		.. INSERT,SCREW THREAD	28
121	XDHZZ	96906	MS21209C0415		.. INSERT,SCREW THREAD	17
122	PAHDD	06481	875777-2		.ELECTRONIC COMPONENT SEE FIG 5 FOR BREAKDOWN	1
123	XDHZZ	96906	MS51958-64		.SCREW,MACHINE	2
124	XDHZZ	52316	KP9950-11C		.WASHER,SADDLE	2
125	XDHZZ	96906	MS35338-138		.WASHER,LOCK	13
126	XDHZZ	80205	NAS620C10L		.WASHER,FLAT	8
127	XDHZZ	96906	MS25036-103		.TERMINAL,LUG	3
128	XDHZZ	96906	MS25036-112		.TERMINAL,LUG	8
129	XDHZZ	96906	MS25036-101		.TERMINAL,LUG	2
130	XDHZO	96906	MS25036-108		.TERMINAL,LUG	4
131	XDHZZ	79963	75(.144)		.TERMINAL,LUG	2
132	XDHZZ	96906	MS51958-60		.SCREW,MACHINE	6
133	XDHZZ	86928	5710-45-15P		.WASHER,FLAT	27
134	PAHZZ	96906	MS24143-D1		. RELAY,ELECTROMAGNET	1
135	PAHZZ	81349	JANTX1N645-1		. SEMICONDUCTOR DEVIC	45
136	PAHDD	06481	875798-1		. ELECTRONIC COMPONENT SEE FIG 6 FOR BREAKDOWN	1
137	XDHZZ	96906	MS51957-13		.SCREW,MACHINE	26
138	PAHZZ	81349	M24236/1-0340		.SWITCH,THERMOSTATIC	1
139	XDHZZ	06481	875797-1		. PLATE,POWER SUPPLY	1
140	XDHZZ	96906	MS24693C269		.SCREW,MACHINE	10
141	PAHZZ	15755	S6D115A400		.POWER SUPPLY	1
142	PAHZZ	15755	B05D-27.6A		.POWER SUPPLY	1
143	PAHZZ	81349	RCR20G392JS		.RESISTOR,FIXED,COMP	1

SECTION II			TM 5-6675-309-24P			
(1)	(2)	(3)	(4)	(5)	(6)	
ITEM	SMR		PART			
NO	CODE	CAGEC	NUMBER	DESCRIPTION AND USABLE ON CODES(UOC)		QTY
144	PAHZZ	81349	M24236/1-0380	.SWITCH, THERMOSTATIC		1
145	XDHZZ	96906	MS24693C25	.SCREW, MACHINE		4
146	PAHZZ	15755	B02D-9.9A	. POWER SUPPLY		1
147	PAHZZ	81349	RCR07G122JS	.RESISTOR, FIXED, COMP		1
148	PAHZZ	81349	M6106/14-001	.RELAY, ELECTROMAGNET		1
149	PAHZZ	81349	FTO1XAO2	.TERMINAL, FEEDTHRU		28
150	PAHZZ	81349	M6106/8-013	.RELAY, ELECTROMAGNET		5
151	PAHZZ	96906	MS27709-1	.RELAY, ELECTROMAGNET		6
152	XDHZZ	06481	875795-1	.BRACKET, RELAY		1
153	XAHZZ	96906	MS21209C0415	. . INSERT, SCREW THREAD		29
154	XAHZZ	96906	MS21209C0615	. . INSERT, SCREW THREAD		10
155	PAHZZ	96906	MS27245-1	.RELAY, ELECTROMAGNET		25
156	XDHZZ	06481	875794-2	.BRACKET, RELAY		1
157	XAHZZ	96906	MS21209C0415	. . INSERT, SCREW THREAD		23
158	XAHZZ	96906	MS21209C0615	. . INSERT, SCREW THREAD		6
159	XDHZZ	96906	MS51957-5	.SCREW, MACHINE		10
160	XDHZZ	96906	MS51957-8	.SCREW, MACHINE		6
161	XDHZZ	96906	MS51957-18	.SCREW, MACHINE		8
162	XDHZZ	80205	NAS620C2	.WASHER, FLAT		36
163	XDHZZ	96906	MS35338-134	.WASHER, LOCK		18
164	XDHZZ	96906	MS35649-224	.NUT, PLAIN, HEXAGON		18
165	PAHZZ	81349	RER60F4640R	.RESISTOR, FIXED, WIRE		1
166	PAHZZ	81349	RER60F1401R	.RESISTOR, FIXED, WIRE		1
167	PAHZZ	81349	RER60F1780R	.RESISTOR, FIXED, WIRE		2
168	PAHZZ	81349	RER65F30R1R	. RESISTOR, FIXED, WIRE		2
169	PAHZZ	81349	RER65F75ROR	. RESISTOR, FIXED, WIRE		1
170	PAHZZ	81349	RER70F36R5R	. RESISTOR, FIXED, WIRE		1
171	PAHZZ	81349	JANTX1N6081	.SEMICONDUCTOR DEVIC		1
172	PAHZZ	81349	RER60F1R0OR	.RESISTER, FIXED, WIRE		1
173	XDHZZ	96906	MS25082C4	.NUT, PLAIN, HEXAGON		3
174	XDHZZ	96906	MS35338-139	.WASHER, LOCK		3
175	XDHZZ	86928	5710-66-15P	.WASHER, FLAT		3
176	XDHZZ	86928	5624-84-5	.WASHER, FLAT		6
177	XDHZZ	79963	379(.260)	.TERMINAL, LUG		3
178	PAHZZ	81349	JANTX1N1186	.SEMICONDUCTOR DEVIC		3
179	XDHZZ	96906	MS25082C3	.NUT, PLAIN, HEXAGON		5
180	XDHZZ	86928	5624-55-3	.WASHER, FLAT		10
181	XDHZZ	96906	MS35431-8	.TERMINAL, LUG		5
182	PAHZZ	81349	JANTX1N1204A	.SEMICONDUCTOR DEVIC		1
183	XDHZZ	06481	875796-1	. PLATE, DIODE		1
184	PAHZZ	81349	JANTX1N2985B	.SEMICONDUCTOR DEVIC		2
185	PAHZZ	81349	JANTX1N2974B	.SEMICONDUCTOR DEVIC		1
186	PAHZZ	81349	JANTX1N3893	.SEMICONDUCTOR DEVIC		1
187	XDHZZ	85480	LWNY-OO2BK	.WASHER, FLAT		9
188	XDHZZ	96906	MS51957-30	.SCREW, MACHINE		2
189	XDHZZ	80205	NAS1397R3B	.CLAMP, LOOP		1
190	XDHZZ	80205	NAS1397R4B	.CLAMP, LOOP		1
191	PAHZZ	81349	JANTX1N2820B	.SEMICONDUCTOR DEVIC		2
192	PAHZZ	81349	JANTX1N2814B	.SEMICONDUCTOR DEVIC		1
193	XDHZZ	21109	AT-03-010-1/S	. INSULATOR, DISK		3
194	XDHZZ	96906	MS51957-6	.CREW MACHINE		2
195	XDHZZ	06481	877739-1	. PLATE		1

SECTION II			TM 5-6675-309-24P			
(1)	(2)	(3)	(4)		(5)	(6)
ITEM NO	SMR CODE	CAGEC	PART NUMBER		DESCRIPTION AND USABLE ON CODES(UOC)	QTY
196	XDHZZ	96906	MS51957-44		.SCREW,MACHINE	8
197	XDHZZ	96906	MS35338-137		.WASHER,LOCK	11
198	XDHZZ	96906	MS15795-807		.WASHER,FLAT	10
199	XDHZZ	06481	875766-2		.BRACKET,COMPONENT	1
200	PAHZZ	81349	M39016/6-104P		.RELAY,ELECTROMAGNET	7
201	XDHHH	06481	875793-2		.BRACKET,RELAY	1
202	XDHZZ	96906	MS21209C0415		.. INSERT,SCREW THREAD	58
203	XDHZZ	96906	MS21209C0615		.. INSERT,SCREW THREAD	1
204	PAHZZ	81349	RER55F56R2R		.RESISTOR,FIXED,WIRE	1
205	PAHZZ	81349	RER55F15R4R		.RESISTOR,FIXED,WIRE	1
206	PAHZZ	81349	M39022/02-1419		.CAPACITOR,FIXED,MET	1
207	PAHZZ	81349	M39022/02-1301		.CAPACITOR,FIXED,MET	1
208	XDHZZ	81349	SE21XEO1		.TERMINAL,STUD	3
209	XDHZZ	96906	MS51957-17		.SCREW,MACHINE	4
210	XDHZZ	06481	625324-4		.CLAMP,RIMCLENCHING	4
211	PAHZZ	06481	917101-8		.FAN,TUBEAXIAL	1
212	XDHZZ	96906	MS51957-29		.SCREW,MACHINE	2
213	XDHZZ	06481	875788-1		.BRACKET,FAN MTG	1
214	XDHZZ	96906	MS51957-27		.SCREW,MACHINE	19
215	XDHZZ	06481	875790-1		.SHROUD	1
216	XDHZZ	80205	NAS1786C06-6		.POST,ELEC-MECH EQPT	2
217	XDHZZ	06481	875791-2		.SHROUD	1
218	XDHZZ	06481	875792-2		.SHROUD	1
219	XDHZZ	06481	875780-1		.BRACKET,RES MTG	1
220	XDHZZ	06481	875781-1		.BRACKET,RES MTG	1
221	XDHZZ	06481	875781-2		.BRACKET,RES MTG	1
222	XDHZZ	06481	875782-1		.BRACKET,RES MTG	1
223	XDHZZ	06481	875783-1		.BRACKET,RES MTG	1
224	XDHZZ	06481	875783-2		.BRACKET,RES MTG	1
225	XDHZZ	06481	875784-1		.BRACKET,RES MTG	4
226	XDHZZ	06481	875785-1		.BRACKET,RES MTG	4
227	PAHZZ	06481	912172-3		.RESISTOR,FIXED,WIRE	1
228	PAHZZ	06481	912172-4		.RESISTOR,FIXED,WIRE	6
229	PAHZZ	06481	912172-2		.RESISTOR,FIXED,WIRE	1
230	PAHZZ	06481	912172-7		.RESISTOR,FIXED,WIRE	1
231	PAHZZ	06481	912172-8		.RESISTOR,FIXED,WIRE	5
232	PAHZZ	06481	912172-6		.RESISTOR,FIXED,WIRE	1
233	XDHZZ	96906	MS24693C272		.SCREW,MACHINE	7
234	XDHZZ	06481	875787-1		.PLATE,RES MTG	1
235	PAHZZ	06481	912172-5		.RESISTOR,FIXED,WIRE	2
236	PAHZZ	06481	912172-1		.RESISTOR,FIXED,WIRE	5
237	XDHZZ	06481	875786-1		.PLATE,RES MTG	1
238	XDHZZ	96906	MS24693C50		.SCREW,MACHINE	1
239	XDHZZ	52316	KP9950-10C		.WASHER,SADDLE	3
240	XDHZZ	85480	F6NY-812BK		.CLAMP,LOOP	2
241	XDHZZ	96906	MS24693C48		.SCREW,MACHINE	1
242	XDHZZ	88245	B1577-314-1		.POST,ELEC-MECH EQPT	2
243	XDHZZ	96906	MS51957-45		.SCREW,MACHINE	3
244	XDHZZ	96906	MS24693C273		.SCREW,MACHINE	4
245	XDHZZ	88245	B1036-14		.HANDLE,BOW	2

END OF FIGURE

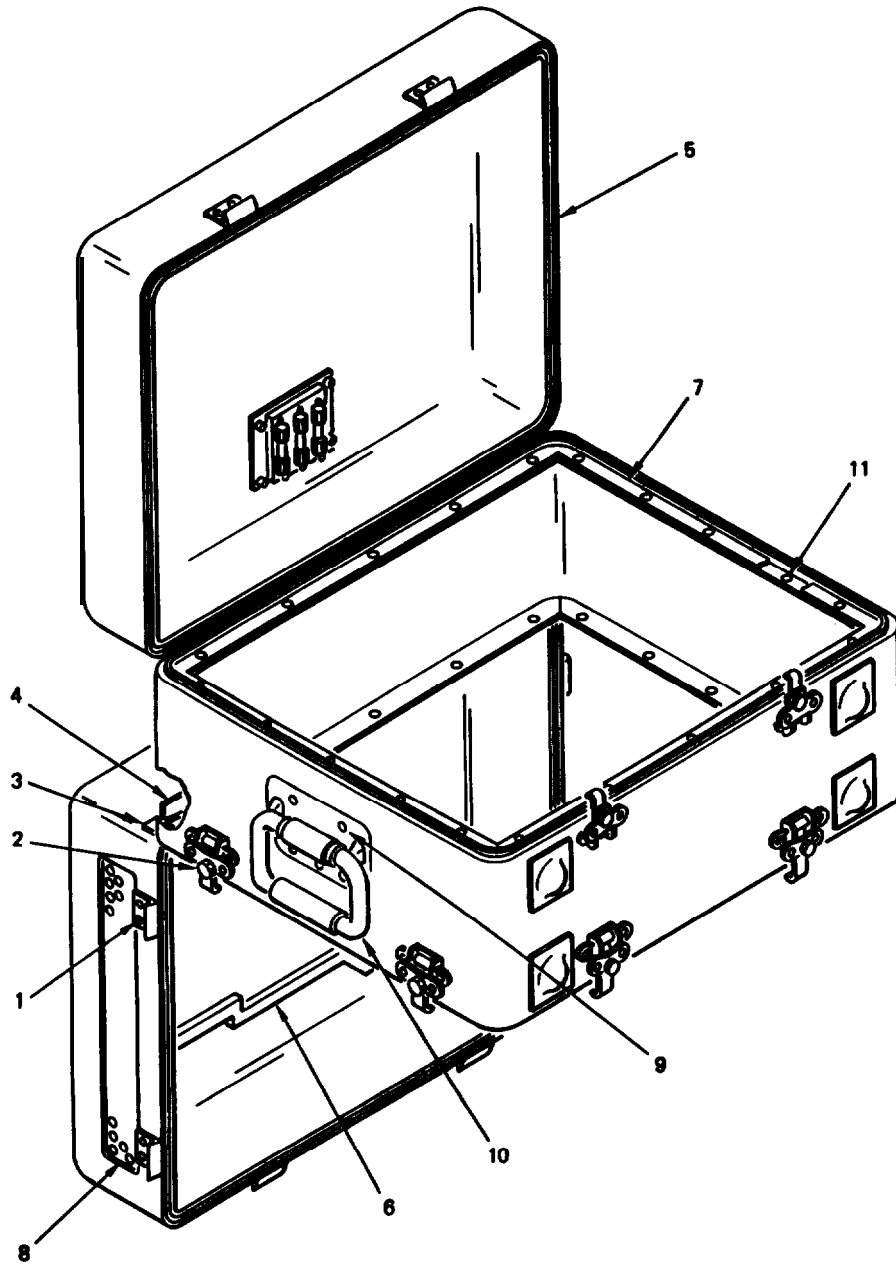


Figure 3. Instrument Case Assembly

SECTION II			TM 5-6675-309-24P		(5)	(6)
(1)	(2)	(3)	(4)			
ITEM	SMR		PART			
NO	CODE	CAGEC	NUMBER	DESCRIPTION AND USABLE ON CODES(UOC)	QTY	
				GROUP 01 TEST SET, POWER SUPPLY		
				FIG. 3 INSTRUMENT CASE ASSEMBLY		
1	XDHZZ	96906	MS20470AD4	..RIVET,SOLID		56
2	XDHZZ	98376	ZSP-2-210-1	..CATCH,CLAMPING		8
3	XDHZZ	98376	ZP20281-1	..HINGE		4
4	XDHZZ	98376	ZP20281-2	..HINGE		4
5	XDHZZ	98376	D41356-113	..SEAL		2
6	XDHZZ	98376	D41356B2	..GASKET		1
7	PAHZZ	98376	D41356C1	..GASKET		1
8	XDHZZ	26195	316	..SCREEN,PERFORATED	V	
9	XDHZZ	96906	MS20470AD6	..RIVET,SOLID		10
10	XDHZZ	98376	ZP20137-2	..HANDLE,BAIL		2
11	XDHZZ	08524	FFN6010-10-C	..NUT,SELF-LOCKING		20

END OF FIGURE

ARMY TM 5-6675-309-24P
MARINE CORPS TM 08840A-24P/2

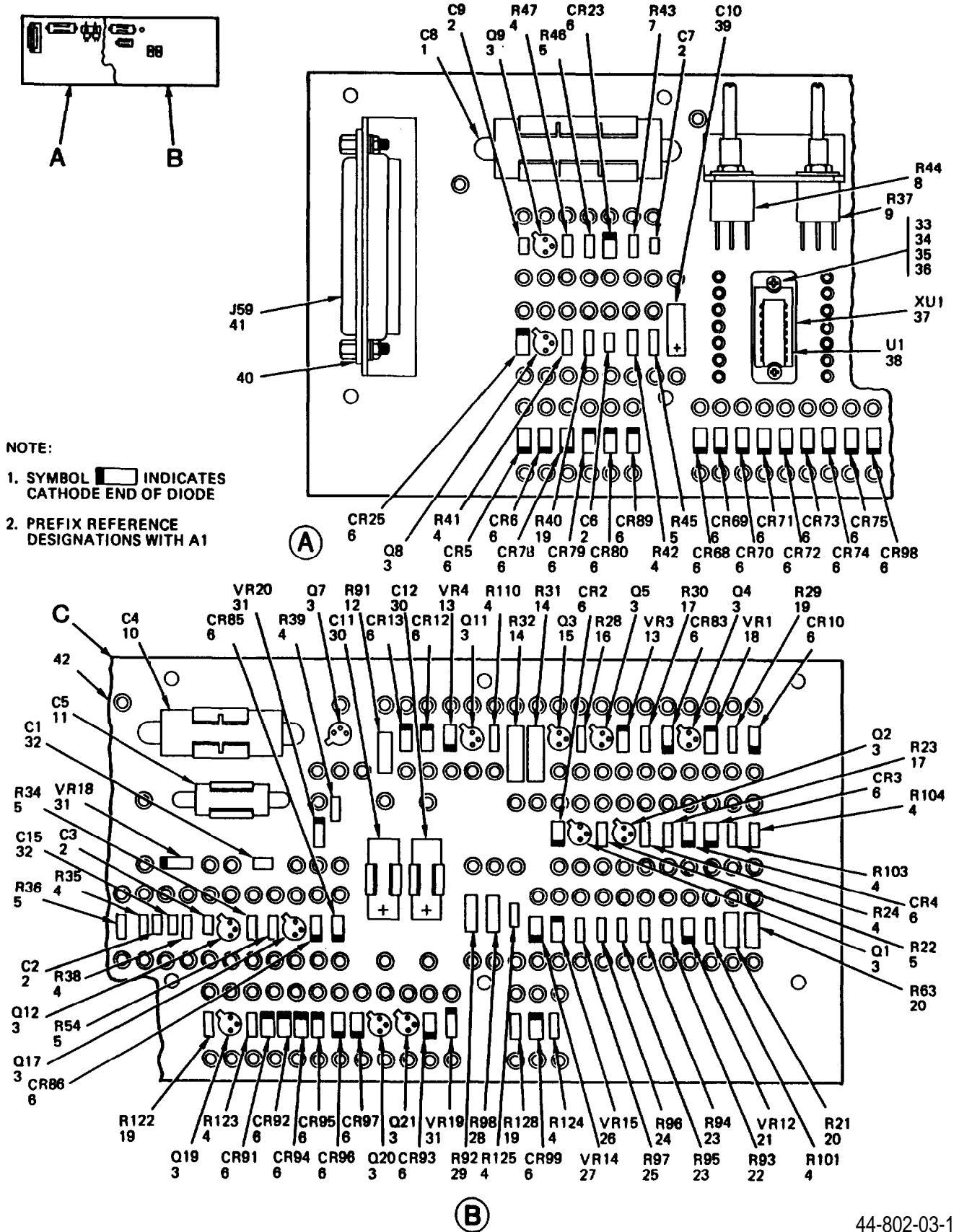
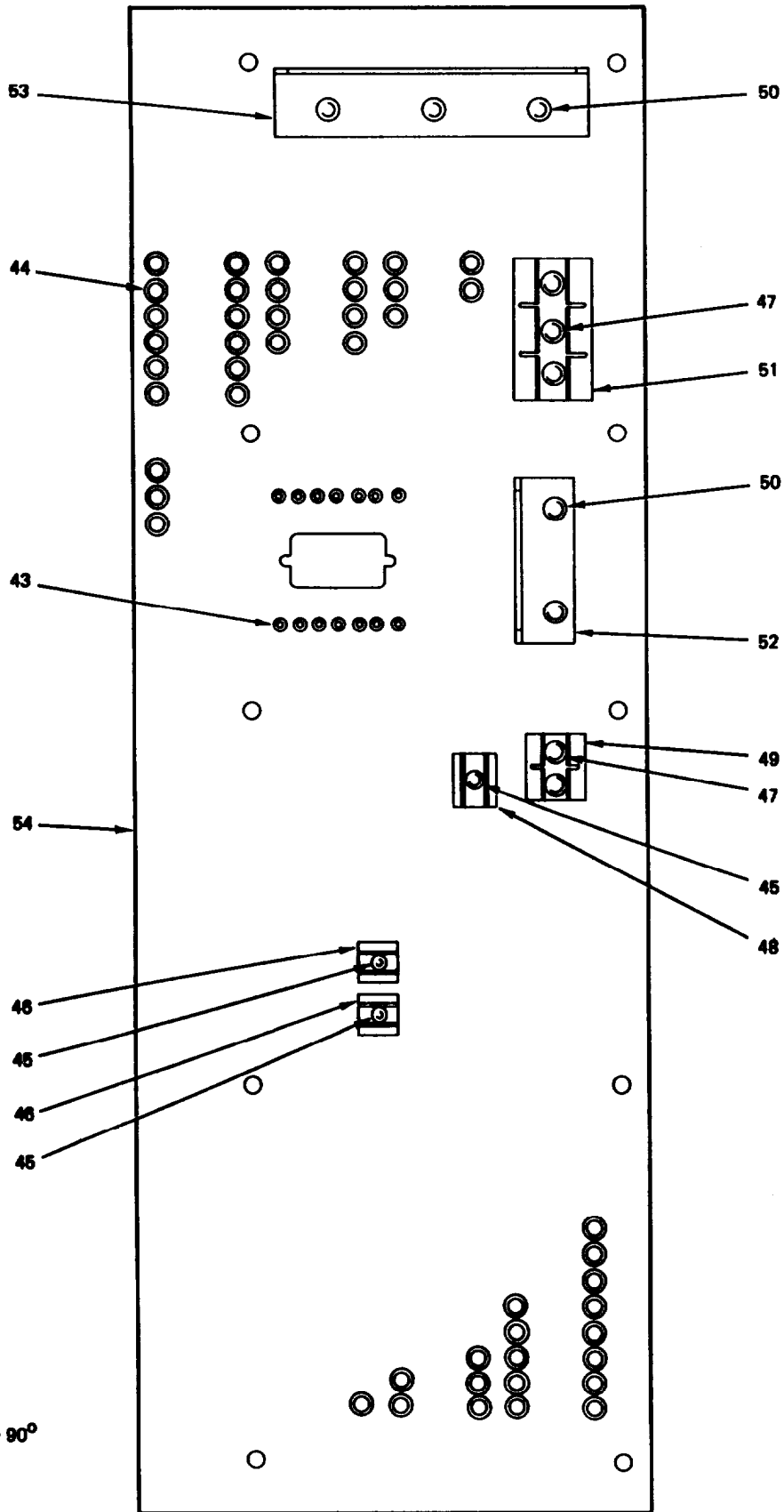


Figure 4. Electronic Component Assembly No. 1 (Sheet 1 of 2)



©
ROTATED 90°

44-802-03-2A

Figure 4. Electronic Component Assembly No. 1 (Sheet 2 of 2)

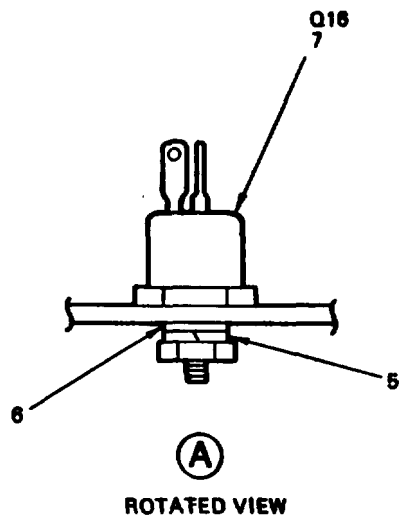
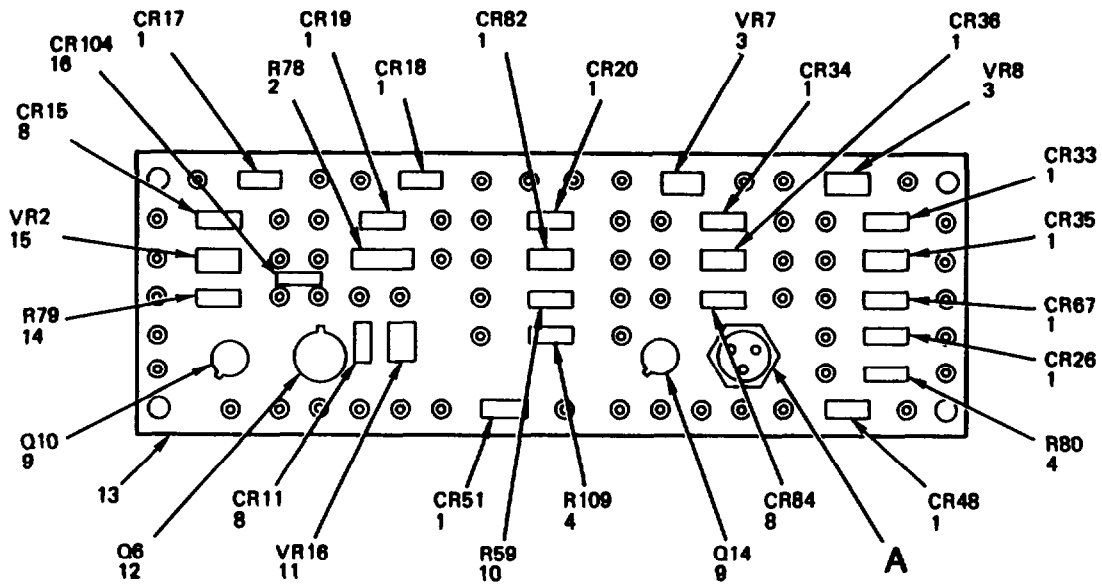
SECTION II			TM 5-6675-309-24P			
(1)	(2)	(3)	(4)	(5)	(6)	
ITEM	SMR	CAGEC	PART	DESCRIPTION AND USABLE ON CODES(UOC)	QTY	
NO	CODE		NUMBER	GROUP 01 TEST SET, POWER SUPPLY		
FIG. 4 ELECTRONIC COMPONENT ASSEMBLY NO. 1						
1	PADZZ	81349	M83421/01-13655	.. CAPACITOR, FIXED, MET	1	
2	PADZZ	81349	M39014/01-1575	.. CAPACITOR, FIXED, CER	5	
3	PADZA	81349	JANTX2N2222A	.. TRANSISTOR	13	
4	PADZZ	81349	RCR07G103JS	.. RESISTOR, FIXED, COMP	14	
5	PADZH	81349	RCR07G102JS	.. RESISTOR, FIXED, COMP	6	
6	PADZZ	81349	JANTX1N645-1	.. SEMICONDUCTOR DEVIC	34	
7	PADZZ	81349	RCR07G105JS	.. RESISTOR, FIXED, COMP	1	
8	PADZZ	81349	RV6LAYS A505A	.. RESISTOR, VARIABLE, N	1	
9	PADZZ	81349	RV6LAYS A105A	.. RESISTOR, VARIABLE, N	1	
10	PADZZ	81349	M83421/01-1353S	.. CAPACITOR, FIXED, MET	1	
11	PADZZ	81349	M83421/01-1275S	.. CAPACITOR, FIXED, MET	1	
12	PADZZ	81349	RWR80S30R1FS	.. RESISTOR, FIXED, WIRE	1	
13	PADZZ	81349	JANTX1N4104	.. SEMICONDUCTOR DEVIC	2	
14	PADZZ	81349	RWR89S1871FS	.. RESISTOR, FIXED, WIRE	2	
15	PADZZ	81349	JANTXV2N2907A	.. TRANSISTOR	1	
16	PADZZ	81349	RCR07G562JS	.. RESISTOR, FIXED, COMP	1	
17	PADZF	81349	RCR07G332JS	.. RESISTOR, FIXED, COMP	2	
18	PADZZ	81349	JANTX1N4626	.. SEMICONDUCTOR DEVIC	1	
19	PADZZ	81349	RCR07G182JS	.. RESISTOR, FIXED, COMP	4	
20	PADZZ	81349	RCR20G103JS	.. RESISTOR, FIXED, COMP	2	
21	PADZZ	81349	JANTX1N4624	.. SEMICONDUCTOR DEVIC	1	
22	PADZZ	81349	RWR81S1400FS	.. RESISTOR, FIXED, WIRE	1	
23	PADZZ	81349	RWR81S20R5FS	.. RESISTOR, FIXED, WIRE	2	
24	PADZZ	81349	RWR81S82R5FS	.. RESISTOR, FIXED, WIRE	1	
25	PADZZ	81349	RWR81S1000FS	.. RESISTOR, FIXED, WIRE	1	
26	PADZZ	81349	JANTX1N4955	.. SEMICONDUCTOR DEVIC	1	
27	PADZZ	81349	JANTX1N4959	.. SEMICONDUCTOR DEVIC	1	
28	PADZZ	81349	RWR80S3650FS	.. RESISTOR, FIXED, WIRE	1	
29	PADZZ	81349	RWR80S40R2FS	.. RESISTOR, FIXED, WIRE	1	
30	PADZZ	81349	M39006/22-0557	.. CAPACITOR, FIXED, ELE	2	
31	PADZZ	81349	JANTX1N751A-1	.. SEMICONDUCTOR DEVIC	3	
32	PADZZ	81349	M39014/01-1593	.. CAPACITOR, FIXED, CER	2	
33	XDDZZ	96906	MS51957-5	.. SCREW, MACHINE	2	
34	XDDZZ	96906	MS35338-134	.. WASHER, LOCK	2	
35	XDDZZ	80205	NAS620C2	.. WASHER, FLAT	4	
36	XDDZZ	96906	MS35649-224	.. NUT, PLAIN, HEXAGON	2	
37	XDDZZ	06481	297210-1	.. SOCKET, PLUG-IN ELE	1	
38	PADZZ	81349	M38510/10902BCA	.. MICROCIRCUIT, LINEAR	1	
39	PADZZ	81349	M39003/01-3024	.. CAPACITOR, FIXED, ELE	1	
40	XDDZZ	71468	D20418-14	.. CLAMP, CONNECTOR	2	
41	XDDZZ	81349	M24308/4-15	.. CONNECTOR, RCPT, ELEC	1	
42	XDDDD	06481	875926-1	.. TERMINAL BOARD	1	
43	XDDZA	96906	MS17157-10	... TERMINAL, FEED THRU	14	
44	XDDZZ	81349	M55155/31-6	... TERMINAL, STUD	214	
45	XDDZZ	96906	MS20470AD3-4	... RIVET, SOLID	3	
46	XDDZZ	81349	M24066/2-108	... CLIP, SPRING TENSION	2	
47	XDDZZ	96906	MS20470AD4-5	... RIVET, SOLID	5	

SECTION II**TM5-6675-309-24P**

(1) ITEM NO	(2) SMR CODE	(3) CAGEC	(4) PART NUMBER	(5) DESCRIPTION AND USABLE ON CODES(UOC)	(6) QTY
48	XDDZZ	81349	M24066/2-109	... CLIP,SPRING TENSION	1
49	XDDZZ	81349	M24066/3-106	... CLIP,SPRING TENSION	1
50	XDDZZ	96906	MS20470AD4-6	... RIVET,SOLID	5
51	XDDZZ	81349	M24066/4-114	... CLIP,SPRING TENSION	1
52	XDDZZ	06481	875926-98	... BRACKET	1
53	XDDZZ	06481	875926-97	... BRACKET	1
54	XDDZZ	06481	875926-99	... BOARD	1

END OF FIGURE

ARMY TM 5-6675-309-24P
MARINE CORPS TM 08840A-24P/2



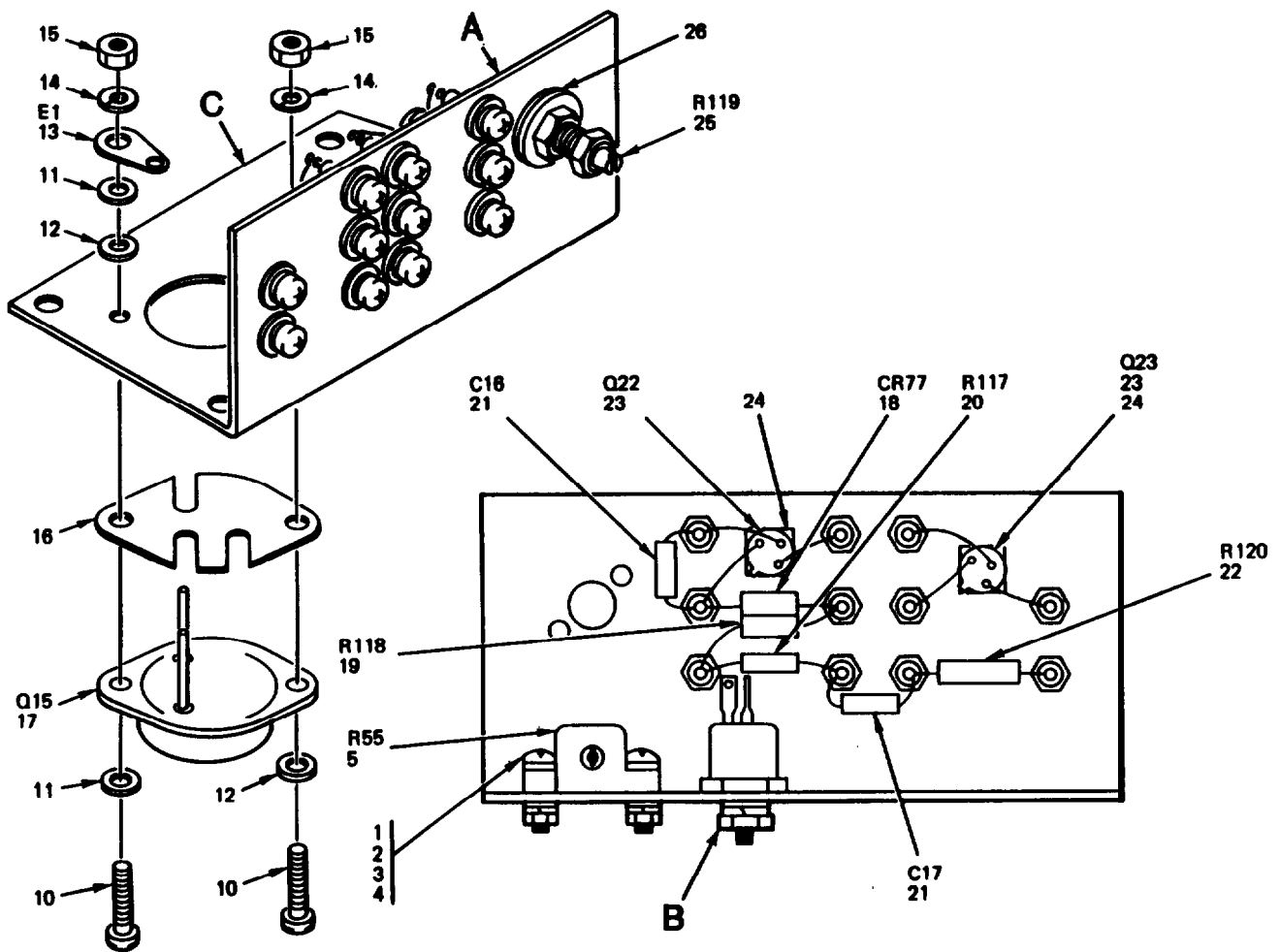
NOTE
PREFIX REFERENCE DESIGNATIONS
WITH A2

44-802-04C

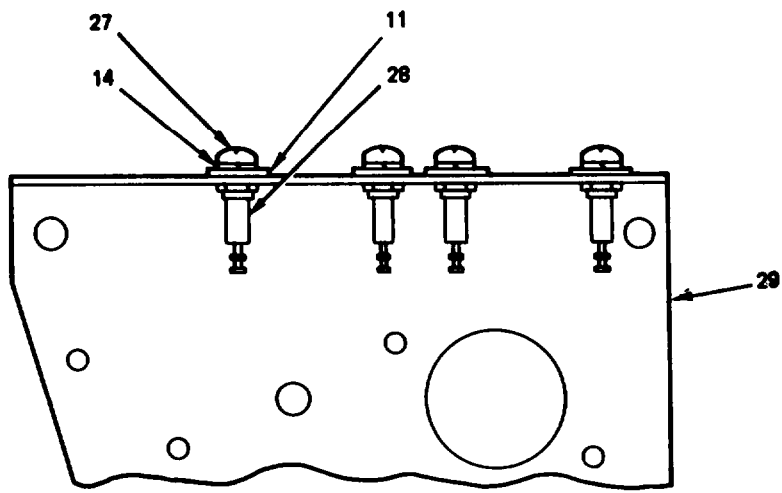
Figure 5. Electronic Component Assembly No. 2

SECTION II			TM 5-6675-309-24P		(5)	(6)
(1)	(2)	(3)	(4)			
ITEM	SMR		PART			
NO	CODE	CAGEC	NUMBER	DESCRIPTION AND USABLE ON CODES(UOC)	QTY	
GROUP 01 TEST SET, POWER SUPPLY						
FIG. 5 ELECTRONIC COMPONENT						
ASSEMBLY NO. 2						
1	PADZZ	81349	JANTX1N645-1	..SEMICONDUCTOR DEVIC	13	
2	PADZZ	81349	RCR20G331JS	..RESISTOR, FIXED, COMP	1	
3	PADZZ	81349	JANTX1N4955	..SEMICONDUCTOR DEVIC	2	
4	PADZZ	81349	RCR07G103JS	..RESISTOR, FIXED, COMP	2	
5	XDDZZ	96906	MS35338-138	..WASHER, LOCK	1	
6	XDDZZ	06424	0770-9	..WASHER, FLAT	1	
7	PADZZ	06481	932146-1	.TRANSISTOR	1	
8	PADZZ	81349	JANTX1N5550	.. SEMICONDUCTOR DEVIC	3	
9	PADZZ	81349	JANTX2N3700	..TRANSISTOR	2	
10	PADZH	81349	RCR07G102JS	..RESISTOR, FIXED, COMP	1	
11	PADZZ	81349	JANTX1N4624	..SEMICONDUCTOR DEVIC	1	
12	PADZZ	81349	JANTX2N3019	..R E S I S T O R	1	
13	XDDZZ	06481	875778-2	..TERMINAL BOARD	1	
14	PADZZ	81349	RCR07G101JS	..RESISTOR, FIXED, COMP	1	
15	PADZZ	81349	JANTX1N4969	..SEMICONDUCTOR DEVIC	1	
16	PADZZ	81349	JANTXV1N5416	..SEMICONDUCTOR DEVIC	1	

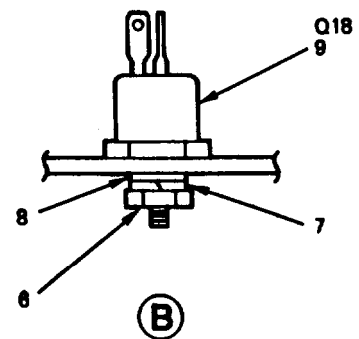
END OF FIGURE



Ⓐ
ROTATED VIEW



Ⓒ
ROTATED VIEW



NOTE:
PREFIX REFERENCE
DESIGNATIONS WITH A3

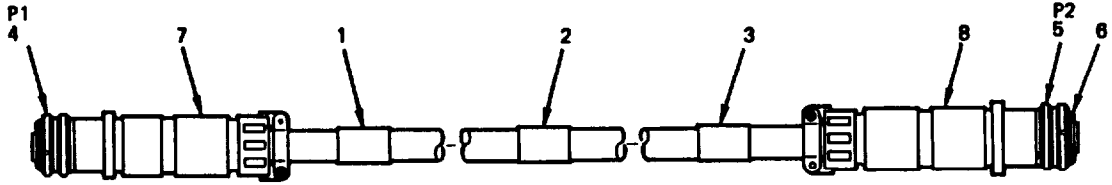
44-802-09C

Figure 6. Current Limiter Component Assembly

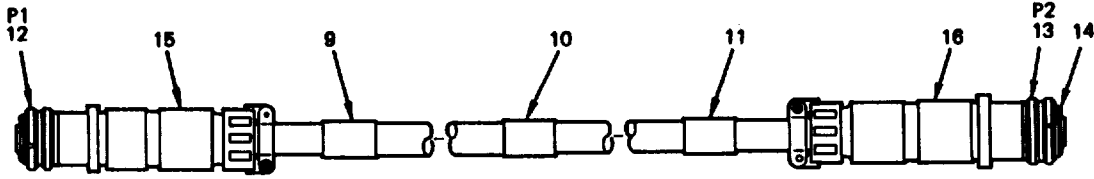
SECTION II			TM5-6675-309-24P			
(1)	(2)	(3)	(4)	(5)	(6)	
ITEM NO	SMR CODE	CAGEC	PART NUMBER	DESCRIPTION AND USABLE ON CODES(UOC)	QTY	
GROUP 01 TEST SET, POWER SUPPLY						
FIG. 6 CURRENT LIMITER COMPONENT ASSEMBLY						
1	XDDZZ	96906	MS51957-4	..SCREW,MACHINE	2	
2	XDDZZ	80205	NAS620C2	..WASHER,FLAT	4	
3	XDDZZ	96906	MS35338-134	..WASHER,LOCK	2	
4	XDDZZ	96906	MS35649-224	..NUT,PLAIN,HEXAGON	2	
5	PADZZ	81349	RER60F1ROOR	.. RESISTOR,FIXED,WIRE	1	
6	XDDZZ	96906	MS35650-304	..NUT,PLAIN,HEXAGON	1	
7	XDDZZ	96906	MS35338-138	..WASHER,LOCK	1	
8	XDDZZ	06424	0770-9	..WASHER,FLAT	1	
9	PADZZ	06481	932146-1	..TRANSISTOR	1	
10	XDDZZ	96906	MS51957-18	..SCREW,MACHINE	2	
11	XDDZZ	96906	MS15795-804	..WASHER,FLAT	15	
12	XDDZZ	85480	LWNY-002BK	..WASHER,FLAT	2	
13	XDDZZ	96906	MS35431-1	..TERMINAL,LUG	1	
14	XDDZZ	96906	MS35338-135	..WASHER,LOCK	13	
15	XDDZZ	96906	MS35649-244	..NUT,PLAIN,HEXAGON	2	
16	XDDZZ	21109	AT-03-010-1/S	.. INSULATOR,DISK	1	
17	PADZZ	81349	JANTX2N3792	..TRANSISTOR	1	
18	PADZZ	81349	JAN1N276	..SEMICONDUCTOR DEVIC	1	
19	PADZH	81349	RCR07G183JS	.. RESISTOR,FIXED,COMP	1	
20	PADZZ	81349	RCR07G680JS	.. RESISTOR,FIXED,COMP	1	
21	PADZZ	81349	M39014/02-1419	.. CAPACITOR,FIXED,CER	2	
22	PADZZ	81349	RCR20G332JS	.. RESISTOR,FIXED,COMP	1	
23	PADZZ	81349	JANTXV2N2907A	.. TRANSISTOR	2	
24	XDDZZ	06481	875798-99	.. INSULATOR	2	
25	PADZZ	81349	RV6LAYS251A	.. RESISTOR,VARIABLE	1	
26	XDDZZ	96906	MS15795-810	.. WASHER,FLAT	1	
27	XDDZZ	96906	MS51957-12	.. SCREW,MACHINE	11	
28	XDDZZ	88245	1481A-4-11.2	.. TERMINAL,STUD	11	
29	XDDZZ	06481	875799-1	.. BRACKET,COMPONENT	1	

END OF FIGURE

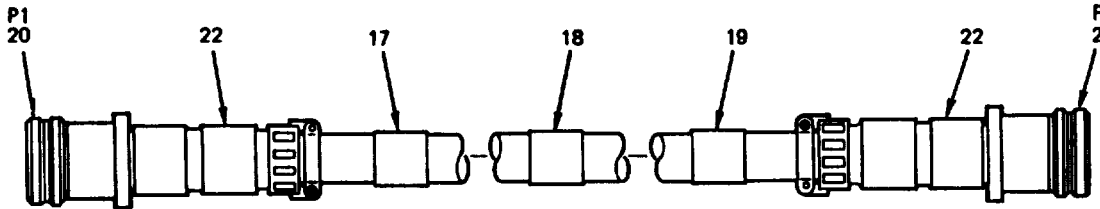
ARMY TM 5-6675-309-24P
MARINE CORPS TM 08840A-24P/2



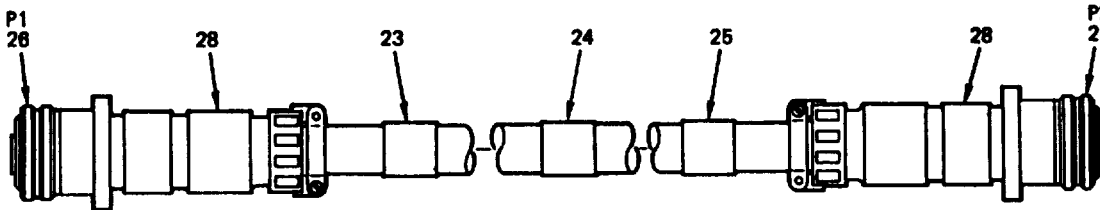
W301



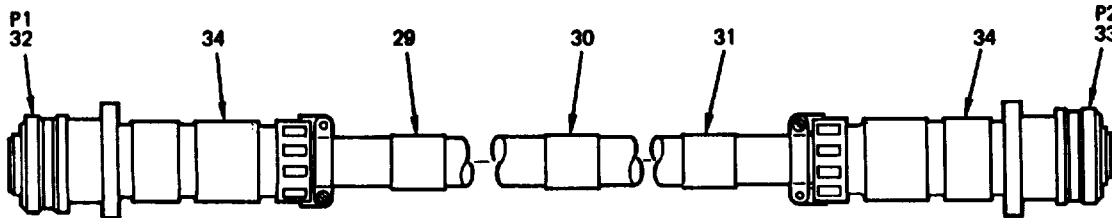
W302



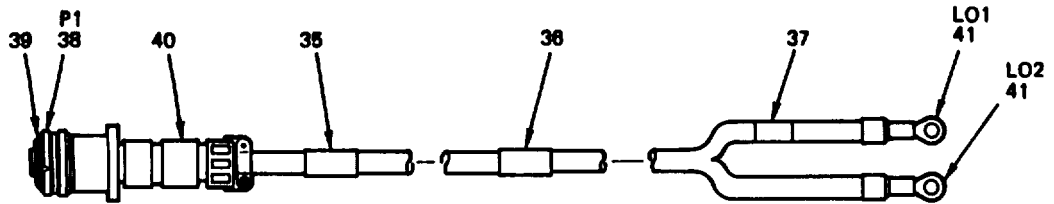
W303



W304



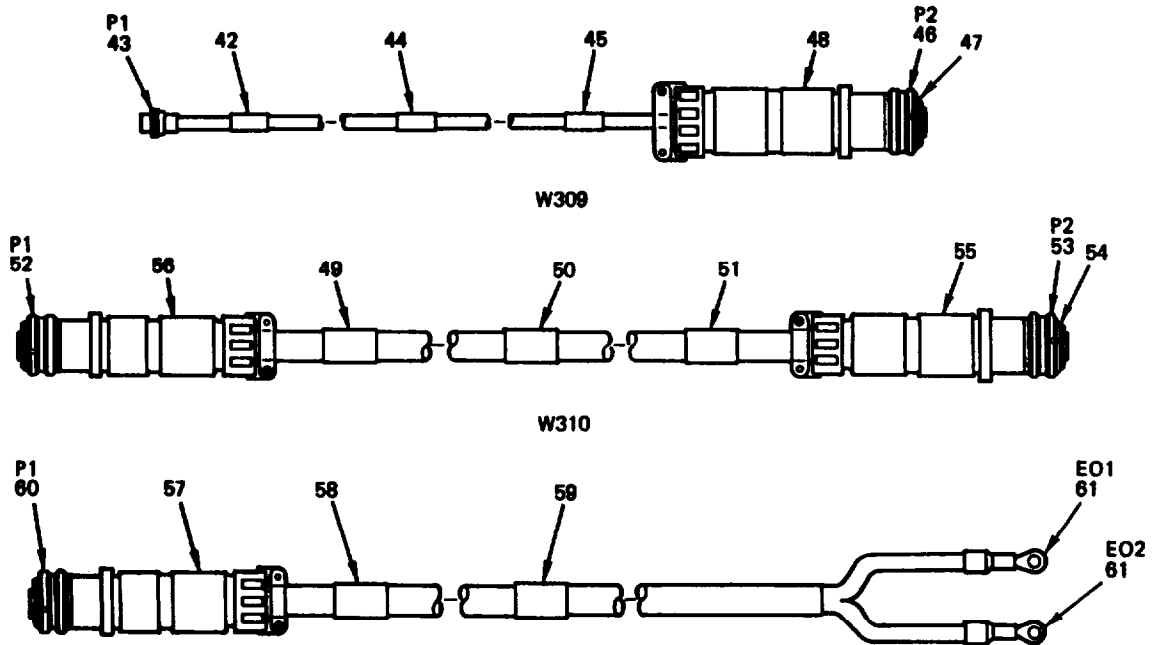
W305



W306

44-802-05-1A

Figure 7. Cable Assembly Set Exploded View (Sheet 1 of 2)



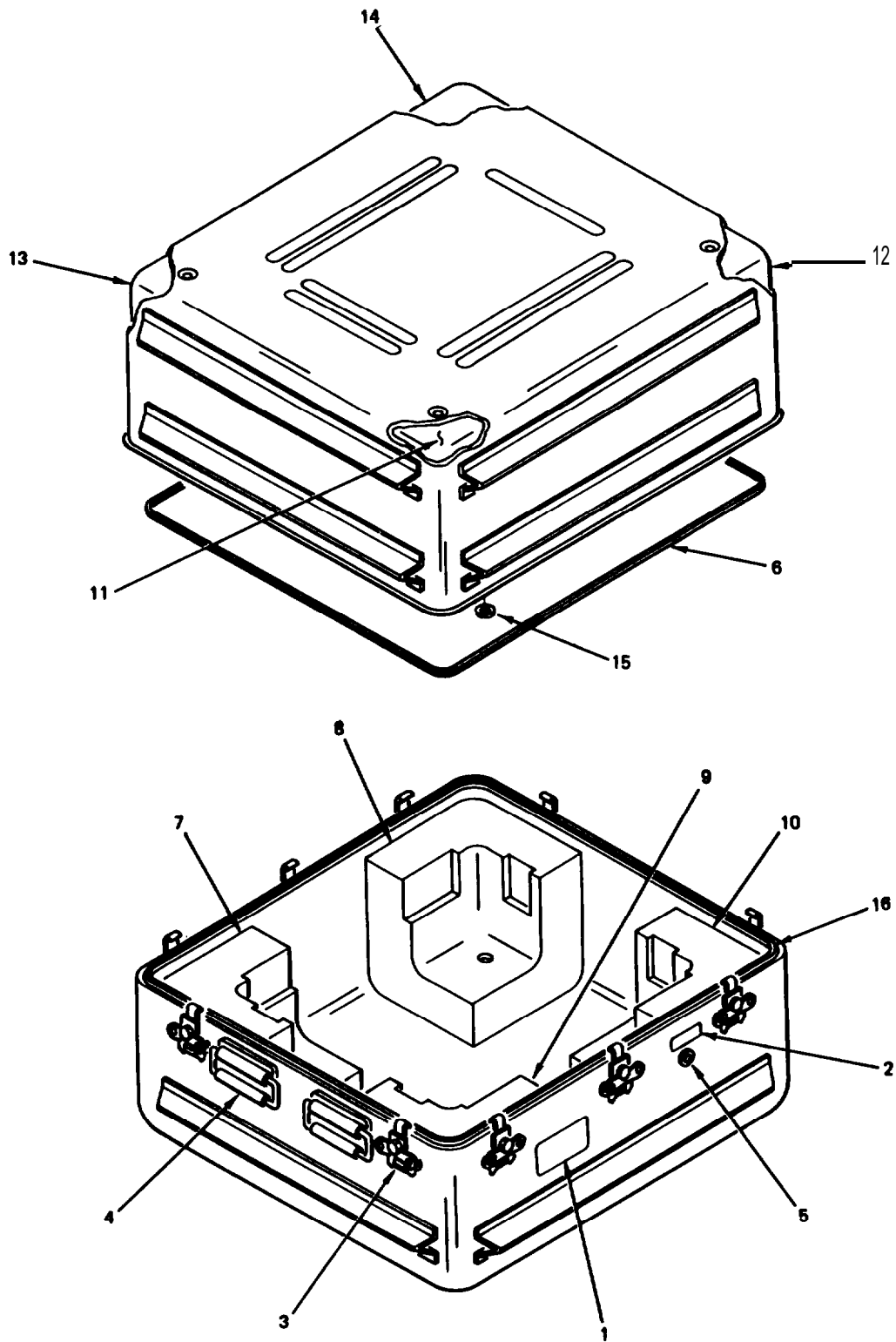
44-802-05-2B

Figure 7. Cable Assembly Set Exploded View (Sheet 2 of 2)

SECTION II			TM 5-6675-309-24P		(5)	(6)
(1) ITEM NO	(2) SMR CODE	(3) CAGEC	(4) PART NUMBER	DESCRIPTION AND USABLE ON CODES(UOC)	GROUP 02	CABLE POWER
FIG. 7 CABLE ASSEMBLY SET EXPLODED VIEW						
1	XDHZZ	06481	875754-25	.BAND,MARKER		1
2	XDHZZ	06481	875754-98	.BAND,MARKER		1
3	XDHZZ	06481	875754-27	.BAND,MARKER		1
4	XDHZZ	96906	MS27484T14B35PA	.CONNECTOR,PLUG,ELEC		1
5	XDHZZ	96906	MS27484T16B35PD	.CONNECTOR,PLUG,ELEC		1
6	XDHZZ	96906	MS27488-22	. PLUG,END SEAL,ELECT		16
7	XDHZZ	31461	31041-141031-120 03	. ADAPTER,CONNECTOR		1
8	XDHZZ	31461	31041-161031-120 03	.ADAPTER,CONNECTOR		1
9	XDHZZ	06481	875754-28	.BAND,MARKER		1
10	XDHZZ	06481	875754-99	.BAND,MARKER		1
11	XDHZZ	06481	875754-30	.BAND,MARKER		1
12	XDHZZ	96906	MS27484T14B35PB	.CONNECTOR,PLUG,ELEC		1
13	XDHZZ	96906	MS27484T16B35SC	.CONNECTOR,PLUG,ELEC		1
14	XDHZZ	96906	MS27488-22	.PLUG,END SEAL,ELECT		16
15	XDHZZ	31461	31041-141031-120 03	.ADAPTER,CONNECTOR		1
16	XDHZZ	31461	31041-161031-120 03	.ADAPTER,CONNECTOR		1
17	XDHZZ	06481	875754-31	.BAND,MARKER		1
18	XDHZZ	06481	875754-100	.BAND,MARKER		1
19	XDHZZ	06481	875754-33	.BAND,MARKER		1
20	XDHZZ	96906	MS27484T22B21PB	.CONNECTOR,PLUG,ELEC		1
21	XDHZZ	96906	MS27484T22BZ1SB	.CONNECTOR,PLUG,ELEC		1
22	XDHZZ	31461	31041-221231-120 03	.ADAPTER,CONNECTOR		2
23	XDHZZ	06481	875754-34	. BAND,MARKER		1
24	XDHZZ	06481	875754-101	. BAND,MARKER		1
25	XDHZZ	06481	875754-36	.BAND,MARKER		1
26	XDHZZ	96906	MS27484T24B24S	.CONNECTOR,PLUG,ELEC		1
27	XDHZZ	96906	MS27484T24B24P	.CONNECTOR,PLUG,ELEC		1
28	XDHZZ	31461	31041-241631-140 03	.ADAPTER,CONNECTOR		2
29	XDHZZ	06481	875754-37	.BAND,MARKER		1
30	XDHZZ	06481	875754-102	.BAND,MARKER		1
31	XDHZZ	06481	875754-39	.BAND,MARKER		1
32	XDHZZ	96906	MS27467T25B19S	.CONNECTOR,PLUG,ELEC		1
33	XDHZZ	96906	MS27467T25B19P	.CONNECTOR,PLUG,ELEC		1
34	XDHZZ	31461	31041-241631-140 03	.ADAPTER,CONNECTOR		2
35	XDHZZ	06481	875754-40	.BAND,MARKER		1
36	XDHZZ	06481	875754-103	.BAND,MARKER		1
37	XDHZZ	96906	MS3368-4-2D	.STRAP,TIEDOWN		1
38	XDHZZ	96906	MS27484T16B6S	.CONNECTOR,PLUG,ELEC		1
39	XDHZZ	96906	MS27488-12	.PLUG,END SEAL,ELECT		2
40	XDHZZ	31461	31041-160431-080	.ADAPTER,CONNECTOR		1

SECTION II			TM 5-6675-309-24P			
(1)	(2)	(3)	(4)	(5)	(6)	
ITEM	SMR	CAGEC	PART	DESCRIPTION AND USABLE ON CODES(UOC)	QTY	
NO	CODE		NUMBER			
			03			
41	PAHZZ	96906	MS25036-157	.TERMINAL,LUG	2	
42	XDHZZ	06481	675754-42	.BAND,MARKER	1	
43	XDHZZ	81349	M24308/4-5	.CONNECTOR,RCPT,ELEC	1	
44	XDHZZ	06481	875754-104	.BAND,MARKER	1	
45	XDHZZ	06481	875754-44	.BAND,MARKER	1	
46	XDHZZ	96906	MS27484T16B35SC	.CONNECTOR,PLUG,ELEC	1	
47	XDHZZ	96906	MS27488-22	.PLUG,END SEAL,ELECT	2	
48	XDHZZ	31461	31041-161231-120	.ADAPTER,CONNECTOR	1	
			03			
49	XDHZZ	06481	875754-45	.BAND,MARKER	1	
50	XDHZZ	06481	875754-105	.BAND,MARKER	1	
51	XDHZZ	06481	875754-47	.BAND,MARKER	1	
52	XDHZH	96906	MS27484T14B35SC	.CONNECTOR,PLUG,ELEC	1	
53	XDHZZ	96906	MS27484T16B35PD	.CONNECTOR,PLUG,ELEC	1	
54	XDHZZ	96906	MS27488-22	.PLUG,END SEAL,ELECT	16	
55	XDHZZ	31461	31041-161031-120	.ADAPTER,CONNECTOR	1	
			03			
56	XDHZZ	31461	31041-141031-120	.ADAPTER,CONNECTOR	1	
			03			
57	XDHZZ	31461	31041-241631-140	.ADAPTER,CONNECTOR	2	
			03			
58	XDHZZ	06481	875754-48	.BAND,MARKER	1	
59	XDHZZ	06481	875754-106	.BAND,MARKER	1	
60	XDHZZ	96906	MS27484T24B24SB	.CONNECTOR,PLUG,ELEC	1	
61	PAHZZ	96906	MS25036-127	.TERMINAL,LUG	1	

END OF FIGURE

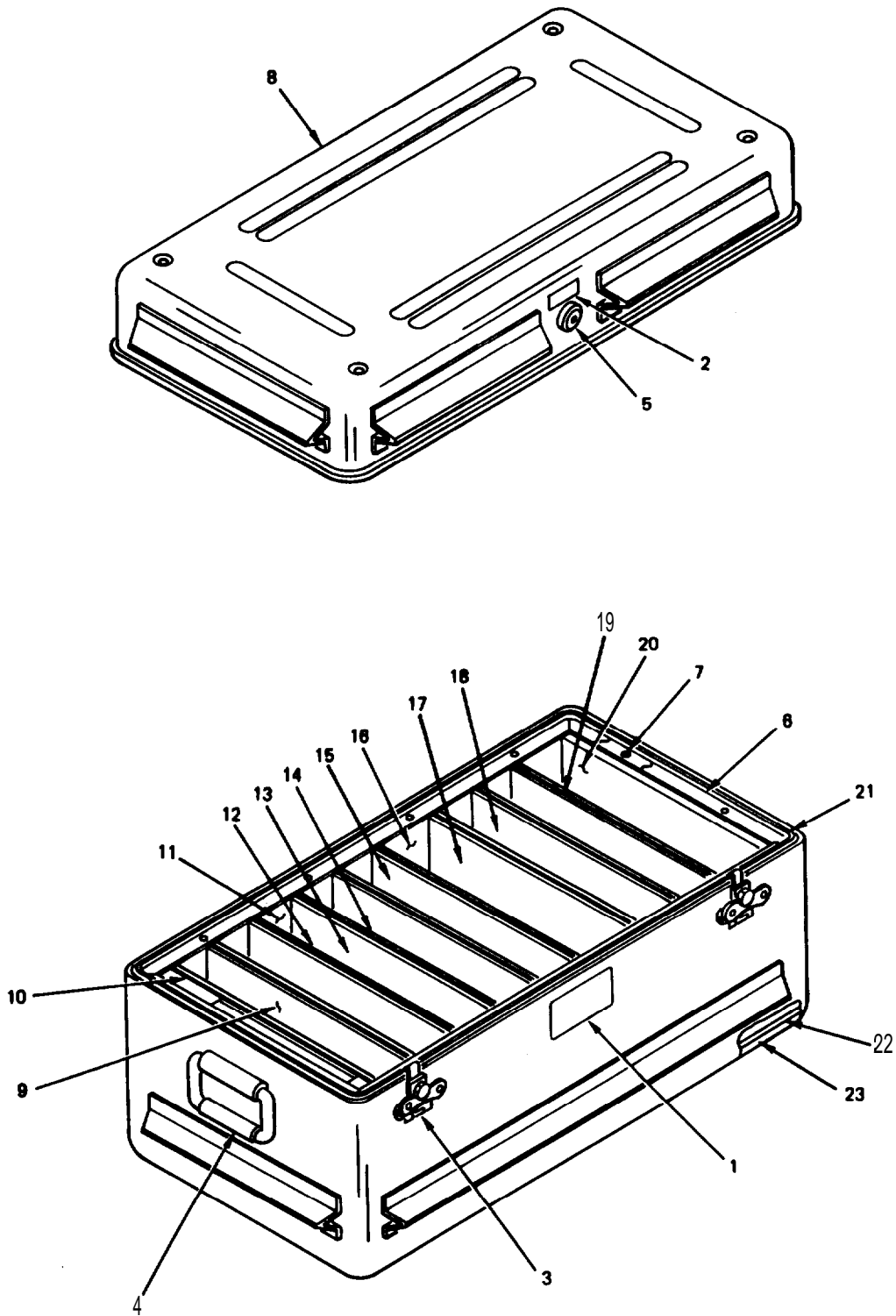


44-802-06D

Figure 8. Power Supply Test Set Case CY-7564/USM-428

SECTION II			TM5-6675-309-24P		(5)	(6)
(1)	(2)	(3)	(4)			
ITEM	SMR		PART		DESCRIPTION AND USABLE ON CODES(UOC)	QTY
NO	CODE	CAGEC	NUMBER			
GROUP 03 CASE						
FIG. 8 POKER SUPPLY TEST SET CASE						
CY-7564/USM-428						
1	XDHZZ	06481	877402-7		.PLATE,IDENT	1
2	XDHZZ	98376	ZSP11-1108		. LABEL	1
3	XDHZZ	98376	ZSP2-230-2		. LATCH	10
4	XDHZZ	98376	ZP20136		.HANDLE,BAIL	4
5	PAHZZ	98376	ZSP6-037-4		.VALVE,VACUUM BREAK1	1
6	PAHZZ	98376	ZP5055-28		.GASKET	1
7	XDHZZ	98376	D41420C12		.CUSHION	1
8	XDHZZ	98376	D41420C11		.CUSHION	1
9	XDHZZ	98376	D41420C10		.CUSHION	1
10	XDHZZ	98376	D41420C9		.CUSHION	1
11	XDHZZ	98376	D41420C14		.CUSHION	1
12	XDHZZ	98376	D41420C13		.CUSHION	1
13	XDHZZ	98376	D41420C15		.CUSHION	1
14	XDHZZ	98376	D41420C16		.CUSHION	1
15	XDHZZ	08524	FFN6010-10-C		.NUT,SELF-LOCKING	14
16	PAHZZ	98376	ZP20634		.GASKET	1

END OF FIGURE



44-802-07B

Figure 9. Power Supply Test Set Accessory Case CY-7610/USM428

SECTION II			TM 5-6675-309-24P		
(1)	(2)	(3)	(4)	(5)	(6)
ITEM	SMR		PART		
NO	CODE	CAGEC	NUMBER	DESCRIPTION AND USABLE ON CODES(UOC)	QTY

GROUP 03 CASE

FIG. 9 POWER SUPPLY TEST SET
ACCESSORY CASE
CY-7610/USM-428

1	XDHZZ	06481	877402-18	.PLATE,IDENT	1
2	XDHZZ	98376	ZSP11-1108	.LABEL	1
3	XDHZZ	98376	ZSP2-230-2	.LATCH	4
4	XDHZZ	98376	ZP20136	.HANDLE,BAIL	2
5	PAHZZ	98376	ZSP6-037-4	.VALVE,VACUUM BREAKI	1
6	PAHZZ	98376	ZP5055-6	.GASKET	1
7	XDHZZ	08524	FFN6010-10-C	.NUT,SELF-LOCKING	12
8	XDHZZ	98376	D41421C6	.CUSHION	1
9	XDHZZ	98376	D41421C13-1	.CUSHION	4
10	XDHZZ	98376	D41421C9	.CUSHION	1
11	XDHZZ	98376	D41421C16-1	.CUSHION	14
12	XDHZZ	98376	D41421-105	.CUSHION	2
13	XDHZZ	98376	D41421C15	.CUSHION	1
14	XDHZZ	98376	D41421-107	.CUSHION	4
15	XDHZZ	98376	D41421C12	.CUSHION	2
16	XDHZZ	98376	D41421C16-3	.CUSHION	2
17	XDHZZ	98376	D41421C14-1	.CUSHION	1
18	XDHZZ	98376	D41421C7	.CUSHION	1
19	XDHZZ	98376	D41421C13	.CUSHION	4
20	XDHZZ	98376	D41421C8	.CUSHION	1
21	PAHZZ	98376	ZP20634	.GASKET	1
22	XDHZZ	98376	D41421-109	.PAD	1
23	XDHZZ	98376	D41421C5	.CUSHION	1

END OF FIGURE

SECTION III. SPECIAL TOOLS LIST

(Not Applicable)

CROSS REFERENCE INDEXES

STOCK NUMBER		NATIONAL STOCK NUMBER INDEX		STOCK NUMBER	
FIG.	ITEM	FIG.	ITEM	FIG.	ITEM
5910-00-010-8717	4	32	5905-00-477-1100	2	172
5910-00-010-8721	6	21		6	5
5905-00-104-8334	5	2	5961-00-481-1187	2	192
5905-00-104-8348	6	22	5905-00-482-0587	2	165
5905-00-106-3666	4	4	5945-00-489-6585	2	155
	5	4	5920-00-504-8634	2	3
5905-00-110-0310	2	143	5905-00-523-8458	2	170
5905-00-110-7620	4	5	5905-00-542-7646	4	8
	5	10	5905-00-556-4101	6	25
5945-00-111-2002	2	151	5920-00-557-5033	2	5
5940-00-113-8191	7	61	5905-00-577-1615	4	9
5905-00-114-5343	4	19	5905-00-581-4268	2	168
5905-00-114-5441	2	99	5961-00-615-0095	6	18
5905-00-115-3560	6	19	5961-00-626-0041	2	135
5905-00-116-8554	4	7		4	6
5910-00-124-0659	4	2		5	1
5905-00-126-6683	4	17	5961-00-627-0275	6	17
5905-00-131-1255	2	147	5961-00-763-7475	4	27
5905-00-141-0591	4	20	5961-00-858-3826	4	3
5905-00-141-0744	4	16	5930-00-892-9479	2	53
5905-00-141-1165	2	98	4820-00-898-3003	8	5
5905-00-141-1168	2	97		9	5
5905-00-141-1183	5	14	5940-00-915-6116	2	149
5940-00-143-4777	7	41	5961-01-009-2234	4	13
5910-00-144-4381	4	39	5961-01-012-8198	4	18
6130-00-168-3732	2	141	5961-01-019-4947	4	15
5961-00-175-3767	2	178		6	23
5961-00-191-5386	2	185	5961-01-023-3449	2	60
5920-00-199-9498	2	4		5	16
5945-00-201-9456	2	134	5961-01-025-9839	4	21
5961-00-240-2810	5	12		5	11
5961-00-243-1649	5	9	5930-01-029-6749	2	21
5930-00-250-5518	2	138	5905-01-035-4476	2	167
6645-00-255-1369	2	67	6240-01-035-5294	2	29
5930-00-262-5850	2	144	5961-01-040-6424	2	191
5925-00-267-1447	2	25	5925-01-040-7156	2	24
5905-00-307-3925	2	166	5910-01-049-7347	2	207
5961-00-356-5312	2	182	5961-01-051-3439	2	171
5961-00-365-4644	5	7	5961-01-102-5719	4	31
	6	9	5905-01-106-0666	4	25
5961-00-387-2940	4	26	5905-01-106-1656	4	22
	5	3	6625-01-108-7112	1	1
5930-00-409-5597	2	30	5330-01-110-9268	8	16
5961-00-417-4146	2	184		9	21
5905-00-429-4171	2	204	4140-01-115-9271	2	211
5930-00-433-1153	2	22	5905-01-115-9452	2	232
5961-00-452-0548	5	8	5905-01-115-9453	2	230
5905-00-455-0845	2	169	5905-01-115-9454	2	231
5961-00-458-6774	2	186	5905-01-115-9455	2	235
5961-00-472-0086	5	15	5905-01-115-9456	2	228

CROSS-REFERENCE INDEXES

STOCK NUMBER	FIG.	NATIONAL STOCK NUMBER INDEX ITEM	STOCK NUMBER	FIG.	ITEM
5905-01-115-9457	2	227			
5905-01-115-9458	2	236			
5905-01-115-9459	2	229			
5999-01-117-7372	2	122			
5999-01-117-7373	2	74			
6130-01-118-1927	1	12			
5910-01-119-4297	4	30			
6130-01-122-7476	2	146			
6210-01-123-0232	2	28			
6210-01-123-0233	2	65			
5930-01-123-9969	2	23			
5330-01-126-2589	8	6			
5999-01-126-4305	2	136			
5330-01-126-5281	9	6			
5910-01-127-5983	2	206			
5995-01-129-7261	1	2			
5995-01-129-7262	1	10			
5995-01-129-7263	1	9			
5995-01-129-7264	1	8			
5995-01-129-7265	1	7			
5995-01-129-7266	1	5			
5995-01-129-7267	1	4			
5995-01-129-7268	1	3			
5995-01-129-7269	1	6			
5945-01-131-5683	2	150			
5330-01-131-9790	3	7			
6210-01-136-7740	2	63			
6210-01-136-7741	2	62			
6210-01-137-2482	2	31			
5905-01-138-6236	6	20			
5998-01-145-9146	1	11			
5905-01-151-2760	4	23			
5905-01-153-8274	4	12			
5910-01-160-2025	4	10			
5905-01-180-4361	4	28			
5905-01-187-6445	4	29			
5905-01-187-7460	4	24			
5910-01-210-7270	4	11			
5945-01-211-9791	2	200			
5930-01-222-3158	2	33			
5910-01-223-1769	4	1			
5930-01-226-0467	2	55			
5930-01-226-0469	2	56			
5910-01-234-5132	2	88			
5962-01-263-9083	4	38			
5905-01-266-4587	4	14			
5905-01-332-2607	2	205			
5945-01-338-9243	2	148			
5925-01-340-0894	2	26			
6130-01-350-2129	2	142			

CROSS-REFERENCE INDEXES

CAGEC	PART NUMBER	PART NUMBER INDEX STOCK NUMBER	FIG.	ITEM
21109	AT-03-010-1/S		2	193
			6	16
86928	A363-20-54		2	96
15755	B02D-9.9A	6130-01-122-7476	2	146
15755	B05D-27.6A	6130-01-350-2129	2	142
88245	B1036-14		2	245
88245	B1577-3/4-1		2	242
71744	CM387-203	6240-01-035-5294	2	29
71468	D110550		2	68
71468	D20418-14		4	40
98376	D41356-113		3	5
98376	D41356-4		2	2
98376	D41356B2		3	6
98376	D41356C1	5330-01-131-9790	3	7
98376	D41420C10		8	9
98376	D41420C11		8	8
98376	D41420C12		8	7
98376	D41420C13		8	12
98376	D41420C14		8	11
98376	D41420C15		8	13
98376	D41420C16		8	14
98376	D41420C9		8	10
98376	D41421-105		9	12
98376	D41421-107		9	14
98376	D41421-109		9	22
98376	D41421C12		9	15
98376	D41421C13		9	19
98376	D41421C13-1		9	9
98376	D41421C14-1		9	17
98376	D41421C15		9	13
98376	D41421C16-1		9	11
98376	D41421C16-3		9	16
98376	D41421C5		9	23
98376	D41421C6		9	8
98376	D41421C7		9	18
98376	D41421C8		9	20
98376	D41421C9		9	10
08524	FFN6010-10-C		3	11
			8	15
			9	7
81349	FHL18G1-2		2	32
81349	FH23CM		2	12
81349	FT01XA02	5940-00-915-6116	2	149
81349	F02B250V1-2A	5920-00-199-9498	2	4
81349	F02B250V1-4A	5920-00-504-8634	2	3
81349	F03A250V8A	5920-03-557-5033	2	5
85480	F6NY-812BK		2	240
27494	GM-3449-17-C1-C1		2	105
27494	GM-3449-39G-C1-C		2	104
	1			
15084	GP-202-17		2	18

CROSS-REFERENCE INDEXES

CAGEC	PART NUMBER	PART NUMBER INDEX		FIG.	ITEM
			STOCK NUMBER		
81349	JANTXV1N5416		5961-01-023-3449	2	60
				5	16
81349	JANTXV2N2907A		5961-01-019-4947	4	15
				6	23
81349	JANTX1N1186		5961-00-175-3767	2	178
81349	JANTX1N1204A		5961-00-356-5312	2	182
81349	JANTX1N2814B		5961-00-481-1187	2	192
81349	JANTX1N2820		5961-01-040-6424	2	191
81349	JANTX1N2974B		5961-00-191-5386	2	185
81349	JANTX1N2985B		5961-00-417-4146	2	184
81349	JANTX1N3893		5961-00-458-6774	2	186
81349	JANTX1N4104		5961-01-009-2234	4	13
81349	JANTX1N4624		5961-01-025-9839	4	21
				5	11
81349	JANTX1N4626		5961-01-012-8198	4	18
81349	JANTX1N4955		5961-00-387-2940	4	26
				5	3
81349	JANTX1N4959		5961-00-763-7475	4	27
81349	JANTX1N4969		5961-00-472-0086	5	15
81349	JANTX1N5550		5961-00-452-0548	5	8
81349	JANTX1N6081		5961-01-051-3439	2	171
81349	JANTX1N645-1		5961-00-626-0041	2	135
				4	6
				5	1
81349	JANTX1N751A-1		5961-01-102-5719	4	31
81349	JANTX2N2222A		5961-00-858-3826	4	3
81349	JANTX2N3019		5961-00-240-2810	5	12
81349	JANTX2N3700		5961-00-243-1649	5	9
81349	JANTX2N3792		5961-00-627-0275	6	17
81349	JAN1N276		5961-00-615-0095	6	18
52316	KP9950-10C			2	239
52316	KP9950-11C			2	124
52316	KP9950-8C			2	76
52316	KP9950-9C			2	75
85480	LWNY-002BK			2	187
				6	12
96906	MS15795-804			2	86
				6	11
96906	MS15795-806			2	7
96906	MS15795-807			2	198
96906	MS15795-808B			2	15
96906	MS15795-810			6	26
96906	MS17157-10			4	43
96906	MS20426AD3-7			2	114
96906	MS20426AD4-7			2	116
96906	MS20470AD3-4			4	45
96906	MS20470AD4			3	1
96906	MS20470AD4-5			4	47
96906	MS20470AD4-6			4	50
96906	MS20470AD6			3	9
96906	MS21076L06			2	118

CROSS-REFERENCE INDEXES

CAGEC	PART NUMBER	PART NUMBER INDEX STOCK NUMBER	FIG.	ITEM
96906	MS21208F1-10		2	119
96906	MS21209C0415		2	121
			2	153
			2	157
			2	202
96906	MS21209C0615		2	120
			2	154
			2	158
			2	203
96906	MS24143-D1	5945-00-201-9456	2	134
96906	MS24693C25		2	145
96906	MS24693C26		2	11
96906	MS24693C269		2	140
96906	MS24693C27		2	39
96906	MS24693C272		2	233
96906	MS24693C273		2	244
96906	MS24693C28		2	6
96906	MS24693C3		2	73
96906	MS24693C4		2	89
96906	MS24693C48		2	241
96906	MS24693C5		2	44
96906	MS24693C50		2	238
96906	MS25036-101		2	129
96906	MS25036-103		2	127
96906	MS25036-108		2	130
96906	MS25036-112		2	128
96906	MS25036-127	5940-00-113-8191	7	61
96906	MS25036-157	5940-00-143-4777	7	41
96906	MS25082C3		2	179
96906	MS25082C4		2	173
96906	MS27245-1	5945-00-489-6585	2	155
96906	MS27467T25B19P		7	33
96906	MS27467T25B19S		7	32
96906	MS27484T14835PA		7	4
96906	MS27484T14B35PB		7	12
96906	MS27484T14B35SC		7	52
96906	MS27484T16B35PD		7	5
			7	53
96906	MS27484T16B35SC		7	13
			7	46
96906	MS27484T16B6S		7	38
96906	MS27484T22B21PB		7	20
96906	MS27484T22B21SB		7	21
96906	MS27484T24B24P		7	27
96906	MS27484T24B24S		7	26
96906	MS27484T24B24SB		7	60
96906	MS27488-12		2	48
			7	39
96906	MS27488-16		2	43
96906	MS27488-22		2	51
			7	6

CROSS-REFERENCE INDEXES

CAGEC	PART NUMBER	PART NUMBER INDEX STOCK NUMBER	FIG.	ITEM
96906	MS27488-22		7	14
			7	47
			7	54
96906	MS27502B25C		2	38
96906	MS27508E1LB35PC		2	52
96906	MS27508E16B35SD		2	50
96906	MS27508E16B6P		2	47
96906	MS27508E22B21PB		2	58
96906	MS27508E24B24PB		2	42
96906	MS27508E24B24S		2	57
96906	MS27511B16C		2	37
96906	MS27511B22C		2	35
96906	MS27511B24C		2	36
96906	MS27656T25B19S		2	54
96906	MS27709-1	5945-00-111-2002	2	151
96906	MS27718-23-1	5930-01-222-3158	2	33
96906	MS27718-26-1	5930-01-226-0469	2	56
96906	MS27718-27-1	5930-01-226-0467	2	55
96906	MS27903-1	5930-00-892-9479	2	53
96906	MS3345-2		2	66
96906	MS3367-4-9		2	83
96906	MS3368-4-2D		7	37
96906	MS35338-134		2	163
			4	34
			6	3
96906	MS35338-135		2	71
			6	14
96906	MS35338-136		2	8
96906	MS35338-137		2	197
96906	MS35338-138		2	125
			5	5
			6	7
96906	MS35338-139		2	174
96906	MS35431-1		6	13
96906	MS35431-8		2	181
96906	MS35431-9		2	94
96906	MS35649-224		2	164
			4	36
			6	4
96906	MS35649-244		2	77
			6	15
96906	MS35649-264		2	9
96906	MS35650-304		6	6
96906	MS51957-12		2	85
			6	27
96906	MS51957-13		2	137
96906	MS51957-14		2	70
96906	MS51957-17		2	209
96906	MS51957-18		2	161
			6	10
96906	MS51957-20		2	100

CROSS-REFERENCE INDEXES

CAGEC	PART NUMBER	PART NUMBER INDEX STOCK NUMBER	FIG.	ITEM
96906	MS51957-26		2	112
96906	MS51957-27		2	214
96906	MS51957-28		2	34
96906	MS51957-29		2	212
96906	MS51957-30		2	188
96906	MS51957-31		2	111
96906	MS51957-4		6	1
96906	MS51957-44		2	196
96906	MS51957-45		2	243
96906	MS51957-5		2	159
			4	33
96906	MS51957-6		2	194
96906	MS51957-8		2	160
96906	MS51958-60		2	132
96906	MS51958-64		2	123
96906	MS51958-65B		2	14
81349	M22885/13-02	5930-00-409-5597	2	30
81349	M24066/2-029		2	115
81349	M24066/2-032		2	117
81349	M24066/2-108		4	46
81349	M24066/2-109		4	48
81349	M24066/3-106		4	49
81349	M24066/4-114		4	51
81349	M24236/1-0340	5930-00-250-5518	2	138
81349	M24236/1-0380	5930-00-262-5850	2	144
81349	M24308/2-15		2	69
81349	M24308/4-15		4	41
81349	M24308/4-5		7	43
81349	M3786/4-5120	5930-01-029-6749	2	21
81349	M3786/4-5124	5930-01-123-9969	2	23
81349	M3786/4-5183	5930-00-433-1153	2	22
81349	M38510/10902BCA	5962-01-263-9083	4	38
81349	M39003/01-3024	5910-00-144-4381	4	39
81349	M39006/22-0557	5910-01-119-4297	4	30
81349	M39014/01-1575	5910-00-124-0659	4	2
81349	M39014/01-1593	5910-00-010-8717	4	32
81349	M39014/02-1419	5910-00-010-8721	6	21
81349	M39016/6-104P	5945-01-211-9791	2	200
81349	M39019/01-255	5925-01-040-7156	2	24
81349	M39022/02-1301	5910-01-049-7347	2	207
81349	M39022/02-1419	5910-01-127-5983	2	206
81349	M5423/14-06	5925-00-267-1447	2	25
81349	M55155/31-6		4	44
81349	M6106/14-001	5945-01-338-9243	2	148
81349	M6106/8-013	5945-01-131-5683	2	150
81349	M7793/5-002	6645-00-255-1369	2	67
81349	M83421/01-1275S	5910-01-210-7270	4	11
81349	M83421/01-1353S	5910-01-160-2025	4	10
81349	M83421/01-1365S	5910-01-223-1769	4	1
81349	M83421/01-5197S	5910-01-234-5132	2	88
80205	NAS1081C08A14L		2	20

CROSS-REFERENCE INDEXES

CAGEC	PART NUMBER	PART NUMBER INDEX STOCK NUMBER	FIG.	ITEM
80205	NAS1081C08A2L		2	19
80205	NAS1291C04M		2	46
80205	NAS1291C06M		2	41
80205	NAS1291C08M		2	78
80205	NAS1397R10B		2	81
80205	NAS1397R12B		2	82
80205	NAS1397R3B		2	189
80205	NAS1397R4B		2	190
80205	NAS1397R6B		2	79
80205	NAS1397R7B		2	80
80205	NAS1786C04-12		2	102
80205	NAS1786C04-16		2	108
80205	NAS1786C04-21		2	72
80205	NAS1786C06-6		2	216
80205	NAS1829C3C08		2	109
80205	NAS43DDO-26		2	101
80205	NAS549L416		2	95
80205	NAS620C10L		2	126
80205	NAS620C2		2	162
			4	35
			6	2
80205	NAS620C4		2	45
80205	NAS620C6		2	40
81349	RCR07G101JS	5905-00-141-1183	5	14
81349	RCR07G102JS	5905-00-110-7620	4	5
			5	10
81349	RCR07G103JS	5905-00-106-3666	4	4
			5	4
81349	RCR07G105JS	5905-00-116-8554	4	7
81349	RCR07G122JS	5905-00-131-1255	2	147
81349	RCR07G182JS	5905-00-114-5343	4	19
81349	RCR07G183JS	5905-00-115-3560	6	19
81349	RCR07G332JS	5905-00-126-6683	4	17
81349	RCR07G562JS	5905-00-141-0744	4	16
81349	RCR07G680JS	5905-01-138-6236	6	20
81349	RCR20G103JS	5905-00-141-0591	4	20
81349	RCR20G222JS	5905-00-141-1168	2	97
81349	RCR20G331JS	5905-00-104-8334	5	2
81349	RCR20G332JS	5905-00-104-8348	6	22
81349	RCR20G392JS	5905-00-110-0310	2	143
81349	RCR20G563JS	5905-00-114-5441	2	99
81349	RCR20G682JS	5905-00-141-1165	2	98
81349	RER55F15R4R	5905-01-332-2607	2	205
81349	RER55F56R2R	5905-00-429-4171	2	204
81349	RER60F1R00R	5905-00-477-1100	2	172
			6	5
81349	RER60F1401R	5905-00-307-3925	2	166
81349	RER60F1780R	5905-01-035-4476	2	167
81349	RER60F4640R	5905-00-482-0587	2	165
81349	RER65F30R1R	5905-00-581-4268	2	168
81349	RER65F75R0R	5905-00-455-0845	2	169

CROSS-REFERENCE INDEXES

CAGEC	PART NUMBER	PART NUMBER INDEX STOCK NUMBER	FIG.	ITEM
81349	RER70F36R5R	5905-00-523-8458	2	170
81349	RV6LAYS A105A	5905-00-577-1615	4	9
81349	RV6LAYS A251A	5905-00-556-4101	6	25
81349	RV6LAYS A505A	5905-00-542-7646	4	8
81349	RWR80S30R1FS	5905-01-153-8274	4	12
81349	RWR80S3650FS	5905-01-180-4361	4	28
81349	RWR80S40R2FS	5905-01-187-6445	4	29
81349	RWR81S1000FS	5905-01-106-0666	4	25
81349	RWR81S1400FS	5705-01-106-1656	4	22
81349	RWR81S20R5FS	5705-01-151-2760	4	23
81349	RWR81S82R5FS	5705-01-187-7460	4	24
81349	RWR89S1871FS	5905-01-266-4587	4	14
81349	SE21XE01		2	208
15755	S6D115A400	6130-30-168-3732	2	141
98376	ZP20136		8	4
			9	4
98376	ZP20137-2		3	10
98376	ZP20281-1		3	3
78376	ZP20281-2		3	4
98376	ZP20634	5330-01-110-9268	8	16
			9	21
98376	ZP5055-28	5330-01-126-2589	8	6
98376	ZP5055-6	5330-01-126-5281	9	6
98376	ZSP-2-210-1		3	2
98376	ZSP11-1108		8	2
			9	2
98376	ZSP2-230-2		8	3
			9	3
98376	ZSP6-037-4	4820-00-898-3003	8	5
			9	5
06424	0770-9		5	6
			6	8
96182	10HA2C5N4(R)R1V1 20VERTEMP	6210-01-137-2482	2	31
96182	10HA2C6N5(GG)R1V 16CHARGE/BATTERY	6210-01-136-7740	2	63
96182	10HA2C6N5(WW)R1V 16PS ON/COMP PS-	6210-01-136-7741	2	62
88245	1481A-4-11.2		2	87
			6	28
83330	1514-102		2	92
83330	1514-103		2	93
81541	205-11-4349-2	5925-01-340-0894	2	26
96182	2763-501		2	64
96182	2763-502		2	59
96182	2763-503		2	27
96182	2849-131	6210-01-123-0232	2	28
96182	2849-141	6210-01-123-0233	2	65
96182	2849-142		2	61
78189	2705-04-00COPPER		2	49
07036	2769-3		2	84

CROSS-REFERENCE INDEXES

CAGEC	PART NUMBER	PART NUMBER INDEX STOCK NUMBER	FIG.	ITEM
06481	277210-1		4	37
31461	31041-141031-120 03		7	7
			7	15
			7	56
31461	31041-160431-080 03		7	40
31461	31041-161031-120 03		7	8
			7	16
			7	55
31461	31041-161231-120 03		7	48
31461	31041-221231-120 03		7	22
31461	31041-241631-140 03		7	28
			7	34
			7	57
26195	316		3	8
79963	379(.260)		2	177
86928	5624-55-3		2	180
86928	5624-84-5		2	176
86928	5710-45-15P		2	133
86928	5710-66-15P		2	175
06481	625324-4		2	210
77963	75(.144)		2	131
06481	790035-1		2	91
06481	875674-2		2	103
06481	875754-100		7	18
06481	875754-101		7	24
06481	875754-102		7	30
06481	875754-103		7	36
06481	875754-104		7	44
06481	875754-105		7	50
06481	875754-106		7	59
06481	875754-25		7	1
06481	875754-27		7	3
06481	875754-28		7	7
06481	875754-30		7	11
06481	875754-31		7	17
06481	875754-33		7	19
06481	875754-34		7	23
06481	875754-36		7	25
06481	875754-37		7	29
06481	875754-37		7	31
06481	875754-40		7	35
06481	875754-42		7	42
06481	875754-44		7	45
06481	875754-45		7	49
06481	875754-47		7	51

CROSS-REFERENCE INDEXES

CAGEC	PART NUMBER	PART NUMBER INDEX STOCK NUMBER	FIG.	ITEM
06481	875754-48		7	58
06481	875754-98		7	2
06481	875754-99		7	10
06481	875765-1		2	113
06481	875766-2		2	199
06481	875767-2		2	107
06481	875768-1		2	106
06481	875769-1	5995-01-129-7261	1	2
06481	875769-2	5795-01-129-7268	1	3
06481	875769-3	5995-01-129-7267	1	4
06481	875769-4	5995-01-129-7266	1	5
06481	875769-5	5975-01-129-7269	1	6
06481	875769-6	5995-01-129-7265	1	7
06481	875769-7	5995-01-129-7264	1	8
06481	875769-8	5975-01-129-7263	1	9
06481	875769-9	5995-01-127-7262	1	10
06481	875774-2		2	10
06481	875775-1		2	13
06481	875777-2	5999-01-117-7372	2	122
08481	875778-2		5	13
06481	875780-1		2	219
06481	875781-1		2	220
06481	875781-2		2	221
06481	875782-1		2	222
06481	875783-1		2	223
06481	875783-2		2	224
06481	875784-1		2	225
06481	875785-1		2	226
06481	875786-1		2	237
06481	875787-1		2	234
06481	875788-1		2	213
06481	875789-1		2	110
06481	875790-1		2	215
06481	875791-2		2	217
06481	875792-2		2	218
06481	875793-2		2	201
06481	875794-2		2	156
06481	875775-1		2	152
06481	875796-1		2	183
06481	875797-1		2	139
06481	875798-1	5979-01-126-4305	2	136
06481	875798-99		6	24
06481	875797-1		6	29
06481	875725-1	5999-01-117-7373	2	74
06481	875926-1		4	42
06481	875726-77		4	53
06481	875726-78		4	52
06481	875926-99		4	54
06481	877402-18		7	1
06481	877402-6		2	1
06481	877402-7		8	1

CROSS-REFERENCE INDEXES

CAGEC	PART NUMBER	PART NUMBER INDEX STOCK NUMBER	FIG.	ITEM
06481	877420-4	6625-01-108-7112	1	1
06481	877424-2		2	70
06481	877425-1	6136-01-118-1927	1	12
06481	877429-1		1	13
06481	877470-1	5998-01-145-9146	1	11
06481	877713-3		2	16
06481	877713-98		2	17
06481	877739-1		2	195
06481	912172-1	5905-01-115-9458	2	236
06481	712172-2	5905-01-115-9457	2	227
06481	712172-3	5905-01-115-9457	2	227
06481	912172-4	5905-01-115-9456	2	228
06481	912172-5	5905-01-115-9455	2	235
06481	912172-6	5905-01-115-9452	2	232
06481	912172-7	5905-01-115-7453	2	230
06481	912172-8	5705-01-115-7454	2	231
06481	717101-8	4140-01-115-7271	2	211
06481	932146-1	5961-00-365-4644	5	7
			6	7

CROSS-REFERENCE INDEXES

FIG.	ITEM	FIGURE AND ITEM NUMBER INDEX STOCK NUMBER	CAGEC	PART NUMBER
1	1	6625-01-108-7112	06481	877420-4
1	2	5995-01-129-7261	06481	875767-1
1	3	5795-01-127-7268	06481	875769-2
1	4	5975-01-127-7267	06481	875769-3
1	5	5995-01-129-7266	06481	875769-4
1	6	5995-01-129-7269	06481	875769-5
1	7	5975-01-129-7265	06481	875769-6
1	8	5995-01-129-7264	06481	875767-7
1	9	5995-01-127-7263	06481	875769-8
1	10	5995-01-129-7262	06481	875769-7
1	11	5798-01-145-9146	06481	877470-1
1	12	6130-01-118-1927	06481	877425-1
1	13		06481	877427-1
2	1		06481	877402-6
2	2		98376	D41356-4
2	3	5920-00-504-8634	81349	F02B250V1-4A
2	4	5920-00-197-9498	81349	F028250V1-2A
2	5	5920-00-557-5033	81349	F03A250V8A
2	6		96906	MS24693C28
2	7		96906	MS15795-806
2	8		96906	MS35338-136
2	9		96906	MS35649-264
2	10		06481	875774-2
2	11		96906	MS24673C26
2	12		81349	FH23CM
2	13		06481	875775-1
2	14		96906	MS51958-65B
2	15		96906	MS15775-808B
2	16		06481	877713-3
2	17		06481	877713-98
2	18		15084	GP-202-17
2	19		80205	NAS1081C08A2L
2	20		80205	NAS1081C08A14L
2	21	5930-01-029-6749	81349	M3786/4-5120
2	22	5930-00-433-1153	81349	M3786/4-5183
2	23	5930-01-123-9969	81349	M3786/4-5124
2	24	5925-01-040-7156	81349	M39017/01-255
2	25	5925-00-267-1447	81349	M5423/14-06
2	26	5925-01-340-0894	81541	205-11-4349-2
2	27		96182	2763-503
2	28	6210-01-123-0232	96182	2849-131
2	29	6240-01-035-5294	71744	CM387-203
2	30	5930-00-409-5597	81349	M22885/13-02
2	31	6210-01-137-2482	96182	10HA2C5N4(R)R1V1 20VERTEMP
2	32		81349	FHL18G1-2
2	33	5930-01-222-3158	96906	MS27718-23-1
2	34		96906	MS51757-28
2	35		96906	MS27511B22C
2	36		96906	MS27511B24C
2	37		96906	MS27511B16C

CROSS-REFERENCE INDEXES

FIG.	ITEM	FIGURE AND ITEM NUMBER INDEX		PART NUMBER
		STOCK NUMBER	CAGEC	
2	38		96906	MS27502B25C
2	39		96906	MS24693C27
2	40		80205	NAS620C6
2	41		80205	NAS1271C06M
2	42		96906	MS27508E24B24PB
2	43		96906	MS27488-16
2	44		96906	MS24693C5
2	45		80205	NAS620C4
2	46		80205	NAS1291C04M
2	47		96906	MS27508E16B6P
2	48		96906	MS27488-12
2	49		78189	2905-04-00COPPER
2	50		96906	MS27508E16B35SD
2	51		96906	MS27488-22
2	52		96906	MS27508E16B35PC
2	53	5930-00-892-9479	96906	MS27703-1
2	54		96906	MS27656T25B19S
2	55	5930-01-226-0467	96906	MS27718-27-1
2	56	5930-01-226-0469	96906	MS27718-26-1
2	57		96906	MS27508E24B24S
2	58		96906	MS27508E22B21PB
2	59		96182	2763-502
2	60	5961-01-023-3449	81349	JANTXV1N5416
2	61		96182	2849-142
2	62	6210-01-136-7741	96182	10HA2C6N5(WW)R1V 16PS ON/COMP PS-
2	63	6210-01-136-7740	96182	10HA2C6N5(GG)R1V 16CHARGE/BATTERY
2	64		96182	2763-501
2	65	6210-01-123-0233	96182	2849-141
2	66		96906	MS3345-2
2	67	6645-00-255-1369	81349	M7793/5-002
2	68		71468	D110550
2	69		81349	M24308/2-15
2	70		96906	MS51957-14
2	71		96906	MS35338-135
2	72		80205	NAS1786C04-21
2	73		96906	MS24673C3
2	74	5999-01-117-7373	06481	875925-1
2	75		52316	KP9950-9C
2	76		52316	KP9950-8C
2	77		96906	MS35649-244
2	78		80205	NAS1291C08M
2	79		80205	NAS1397R6B
2	80		80205	NAS1397R7B
2	81		80205	NAS1397R10B
2	82		80205	NAS1397R12B
2	83		96906	MS3367-4-9
2	84		09036	2967-3
2	85		96906	MS51757-12
2	86		96906	MS15795-804

CROSS-REFERENCE INDEXES

FIG.	ITEM	FIGURE AND ITEM NUMBER INDEX		PART NUMBER
		STOCK NUMBER	CAGEC	
2	87		88245	1481A-4-11.2
2	88	5910-01-234-5132	81349	M83421/01-5197S
2	87		96906	MS24693C4
2	90		06481	877424-2
2	91		06481	790035-1
2	92		83330	1514-102
2	93		83330	1514-103
2	94		96906	MS35431-9
2	95		80205	NAS549L416
2	96		86928	A363-20-54
2	97	5905-00-141-1168	81349	RCR20G222JS
2	98	5905-00-141-1165	81349	RCR20G682JS
2	99	5905-00-114-5441	81349	RCR20G563JS
2	100		96906	MS51957-20
2	101		80205	NAS43DDO-26
2	102		80205	NAS1786C04-12
2	103		06481	875674-2
2	104		27494	GM-3449-37G-C1-C 1
2	105		27494	GM-3449-17-C1-C1
2	106		06481	875768-1
2	107		06481	875767-2
2	108		80205	NAS1786C04-16
2	109		80205	NAS1827C3C08
2	110		06481	875787-1
2	111		96906	MS51757-31
2	112		96906	MS51957-26
2	113		06481	875765-1
2	114		96906	MS20426AD3-7
2	115		81349	M24066/2-029
2	116		96906	MS20426AD4-7
2	117		81349	M24066/2-032
2	118		96906	MS21076L06
2	119		96906	MS21208F1-10
2	120		96906	MS21209C0615
2	121		96906	MS21209CO415
2	122	5999-01-117-7372	06481	875777-2
2	123		96906	MS51958-64
2	124		52316	KP9750-11C
2	125		96906	MS35338-138
2	126		80205	NAS620C10L
2	127		96906	MS25036-103
2	128		96906	MS25036-112
2	129		96906	MS25036-101
2	130		96906	MS25036-108
2	131		79963	75(.144)
2	132		96906	MS51958-60
2	133		86928	5710-45-15P
2	134	5945-00-201-9456	96906	MS24143-D1
2	135	5961-00-626-0041	81349	JANTX1N645-1
2	136	5999-01-126-4305	06481	875798-1

CROSS-REFERENCE INDEXES

FIG	ITEM	FIGURE AND ITEM NUMBER INDEX STOCK NUMBER	CAGEC	PART NUMBER
2	137		96906	MS51957-13
2	138	5930-00-250-5518	81349	M24236/1-0340
2	139		06481	875797-1
2	140		96906	MS24693C269
2	141	6130-00-168-3732	15755	S6D115A4100
2	142	6130-01-350-2127	15755	B05D-27.6A
2	143	5905-00-110-0310	81349	RCR20G392JS
2	144	5930-00-262-5850	81349	M24236/1-0380
2	145		96906	MS24693C25
2	146	6130-01-122-7476	15755	B02D-9.9A
2	147	5905-00-131-1255	81349	RCR07G122JS
2	148	5945-01-338-9243	81349	M6106/14-001
2	149	5940-00-715-6116	81349	FT01XA02
2	150	5945-01-131-5683	81349	M6106/8-013
2	151	5945-00-111-2002	96906	MS27707-1
2	152		06481	875775-1
2	153		96906	MS21209C0415
2	154		96906	MS21209C0615
2	155	5945-00-487-6585	96906	MS27245-1
2	156		06481	875794-2
2	157		96906	MS21209C0415
2	158		96906	MS21209C0615
2	159		96906	MS51957-5
2	160		96906	MS51957-8
2	161		96906	MS51957-18
2	162		80205	NAS620C2
2	163		96906	MS35338-134
2	164		96906	MS35649-224
2	165	5905-00-482-0587	81349	RER60F4640R
2	166	5905-00-307-3925	81349	RER60F1401R
2	167	5905-01-035-4476	81349	RER60F1780R
2	168	5905-00-581-4268	81349	RER65F30R1R
2	169	5905-00-455-0845	81349	RER65F75R0R
2	170	5705-00-523-8458	81349	RER70F36R5R
2	171	5961-01-051-3439	81349	JANTX1N6081
2	172	5705-00-477-1100	81349	RER60F1R00R
2	173		96906	MS25082C4
2	174		96906	MS35338-139
2	175		86928	5710-66-15P
2	176		86928	5624-84-5
2	177		79963	379(.260)
2	178	5961-00-175-3767	81349	JANTX1N1186
2	179		96906	MS25082C3
2	180		86928	5624-55-3
2	181		96906	MS35431-8
2	182	5961-00-356-5312	81349	JANTX1N1204A
2	183		06481	875796-1
2	184	5961-00-417-4146	81349	JANTX1N2785B
2	185	5961-00-191-5386	81349	JANTX1N2774B
2	186	5961-00-458-6774	81349	JANTX1N3873
2	187		85480	LWNY-002BK

CROSS-REFERENCE INDEXES

FIG.	ITEM	FIGURE AND ITEM NUMBER INDEX		PART NUMBER
		STOCK NUMBER	CAGEC	
2	188		96906	MS51757-30
2	189		80205	NAS1397R3B
2	190		80205	NAS1397R4B
2	191	5961-01-040-6424	81349	JANTX1N2820B
2	192	5961-00-481-1187	81349	JANTX1N2814B
2	193		21109	AT-03-010-1/S
2	194		96706	MS51757-6
2	195		06481	877739-1
2	196		96906	MS51757-44
2	197		96906	MS35338-137
2	198		96906	MS15775-807
2	199		06481	875766-2
2	200	5945-01-211-9791	81349	M37016/6-104P
2	201		06481	875793-2
2	202		96906	MS21209C0415
2	203		96906	MS21209C0615
2	204	5905-00-429-4171	81349	RER55F56R2R
2	205	5905-01-332-2607	81349	RER55F15R4R
2	206	5910-01-127-5983	81349	M37022/02-1419
2	207	5910-01-049-7347	81349	M37022/02-1301
2	208		81349	SEZ1XE01
2	209		96906	MS51957-17
2	210		06481	525324-4
2	211	4140-01-115-9271	06481	917101-8
2	212		96906	MS51757-29
2	213		06481	875788-1
2	214		96906	MS51957-27
2	215		06481	875770-1
2	216		80205	NAS1786C06-6
2	217		06481	875791-2
2	218		06481	875792-2
2	219		06481	875780-1
2	220		06481	875781-1
2	221		06481	875781-2
2	222		06481	875782-1
2	223		06481	875783-1
2	224		06481	875783-2
2	225		06481	875784-1
2	226		06481	875785-1
2	227	5905-01-115-9457	06481	912172-3
2	228	5905-01-115-9456	06481	912172-4
2	229	5905-01-115-9459	06481	912172-2
2	230	5905-01-115-9453	06481	912172-7
2	231	5905-01-115-9454	06481	912172-8
2	232	5905-01-115-9452	06481	912172-6
2	233		96906	MS24693C272
2	234		06481	875787-1
2	235	5905-01-115-9455	06481	912172-5
2	236	5905-01-115-9458	06481	912172-1
2	237		06481	875786-1
2	238		96906	MS24693C50

CROSS-REFERENCE INDEXES

FIG.	ITEM	FIGURE AND ITEM NUMBER INDEX		PART NUMBER
		STOCK NUMBER	CAGEC	
2	239		52316	KP7750-10C
2	240		85480	F6NY-812BK
2	241		96906	MS24693C48
2	242		88245	B1577-3/4-1
2	243		96906	MS51957-45
2	244		96906	MS24693C273
2	245		88245	B1036-14
3	1		96906	MS20470AD4
3	2		98376	ZSP-2-210-1
3	3		98376	ZP20281-1
3	4		98376	ZP20281-2
3	5		98376	D41356-113
3	6		98376	D41356B2
3	7	5330-01-131-9790	98376	D41356C1
3	8		26195	316
3	9		96906	MS20470AD6
3	10		98376	ZP20137-2
3	11		08524	FFN6010-10-C
4	1	5910-01-223-1769	81349	M83421/01-1365S
4	2	5910-00-124-0659	81349	M39014/01-1575
4	3	5961-00-858-3826	81349	JANTX2N2222A
4	4	5905-00-106-3666	81349	RCR07G103JS
4	5	5905-00-110-7620	81349	RCR07G102JS
4	6	5961-00-626-0041	81349	JANTX1N645-1
4	7	5905-00-116-8554	81349	RCR07G105JS
4	8	5905-00-542-7646	81349	RV6LAYS A505A
4	9	5905-00-577-1615	81349	RV6LAYS A10SA
4	10	5910-01-160-2025	81349	M83421/01-1353S
4	11	5910-01-210-7270	81349	M83421/01-1275S
4	12	5905-01-153-8274	81349	RWR80S30R1FS
4	13	5961-01-009-2234	81349	JANTX1N4104
4	14	5905-01-266-4587	81349	RWR89S1871FS
4	15	5961-01-019-4947	81349	JANTXVZN2907A
4	16	5905-00-141-0744	81349	RCR07G562JS
4	17	5905-00-126-6683	81349	RCR07G332JS
4	18	5961-01-012-8198	81349	JANTX1N4626
4	19	5905-00-114-5343	81349	RCR07G182JS
4	20	5905-00-141-0591	81349	RCR20G103JS
4	21	5961-01-025-9839	81349	JANTX1N4624
4	22	5905-01-106-1656	81349	RWR81S1400FS
4	23	5905-01-151-2760	81349	RWR81S20R5FS
4	24	5905-01-187-7460	81349	RWR81S82R5FS
4	25	5905-01-106-0666	81349	RWR81S1000FS
4	26	5961-00-387-2940	81349	JANTX1N4955
4	27	5961-00-763-7475	81349	JANTX1N4959
4	28	5905-01-180-4361	81349	RWR80S3650FS
4	29	5905-01-187-6445	81349	RWR80S40R2FS
4	30	5910-01-119-4297	81349	M37006/22-0557
4	31	5961-01-102-5717	81349	JANTX1N751A-1
4	32	5910-00-010-8717	81349	M39014/01-1573
4	33		96906	MS51957-5

CROSS-REFERENCE INDEXES

FIG.	ITEM	FIGURE AND ITEM NUMBER INDEX		PART NUMBER
		STOCK NUMBER	CAGEC	
4	34		96906	MS35338-134
4	35		80205	NAS620C2
4	36		96906	MS35649-224
4	37		06481	277210-1
4	38	5962-01-263-9083	81349	M38510/10902BCA
4	39	5910-00-144-4381	81349	M39003/01-3024
4	40		71468	D20418-14
4	41		81349	M24308/4-15
4	42		06481	875726-1
4	43		96906	MS17157-10
4	44		81349	M55155/31-6
4	45		96906	MS20470AD3-4
4	46		81349	M24066/2-108
4	47		96906	MS20470AD4-5
4	48		81349	M24066/2-109
4	49		81349	M24066/3-106
4	50		96906	MS20470AD4-6
4	51		81349	M24066/4-114
4	52		06481	875726-78
4	53		06481	875926-97
4	54		06481	875926-99
5	1	5961-00-626-0041	81349	JANTX1N645-1
5	2	5905-00-104-8334	81349	RCR20G331JS
5	3	5961-00-387-2740	81349	JANTX1N4955
5	4	5905-00-106-3666	81349	RCR07G103JS
5	5		96906	MS35338-138
5	6		06424	0770-9
5	7	5961-00-365-4644	06481	932146-1
5	8	5961-00-452-0548	81349	JANTX1N5550
5	9	5761-00-243-1649	81349	JANTX2N3700
5	10	5705-00-110-7620	81349	RCR07G102JS
5	11	5961-01-025-9837	81349	JANTX1N4624
5	12	5961-00-240-2810	81349	JANTX2N3019
5	13		06481	875778-2
5	14	5905-00-141-1183	81349	RCR07G101JS
5	15	5961-00-472-0086	81349	JANTX1N4969
5	16	5961-00-023-3449	81349	JANTXV1N5416
6	1		96906	MS51957-4
6	2		80205	NAS620C2
6	3		96906	MS35338-134
6	4		96906	MS35649-224
6	5	5905-00-477-1100	81349	RER60F1R00R
6	6		96906	MS35650-304
6	7		96906	MS35338-138
6	8		66424	0770-7
6	9	5961-00-365-4644	06481	932146-1
6	10		96906	MS51957-18
6	11		96906	MS15775-804
6	12		85480	LWNY-002BK
6	13		96906	MS35431-1
6	14		96906	MS35338-135

CROSS-REFERENCE INDEXES

FIG.	ITEM	FIGURE AND ITEM NUMBER INDEX		PART NUMBER
		STOCK NUMBER	CAGEC	
6	15		96906	MS35649-244
6	16		21109	AT-03-010-1/S
6	17	5961-00-627-0275	81349	JANTX2N3792
6	18	5961-00-615-0095	81349	JAN1N276
6	19	5905-00-115-3560	81349	RCR07G183JS
6	20	5905-01-138-6236	81349	RCR07G680JS
6	21	5910-00-010-8721	81349	M37014/02-1419
6	22	5905-00-104-8348	81349	RCR20G332JS
6	23	5961-01-019-4947	81349	JANTXV2N2707A
6	24		06481	875798-97
6	25	5905-00-556-4101	81349	RV6LAYS251A
6	26		96906	MS15795-810
6	27		96906	MS51757-12
6	28		88245	1481A-4-11.2
6	29		06481	875777-1
7	1		06481	875754-25
7	2		06481	875754-98
7	3		06481	875754-27
7	4		96906	MS27484T14B35PA
7	5		96906	MS27484T16B35PD
7	6		96906	MS27488-22
7	7		31461	31041-141031-120 03
7	8		31461	31041-161031-120 03
7	9		06481	875754-28
7	10		06481	875754-77
7	11		06481	875754-30
7	12		96906	MS27484T14B35PB
7	13		96906	MS27484T16B35SC
7	14		96906	111527488-22
7	15		31461	31041-141031-120 03
7	16		31461	31041-161031-120 03
7	17		06481	875754-31
7	18		06481	875754-100
7	19		06481	875754-33
7	20		96906	MS27484T22B21PB
7	21		96906	MS27484T22B21SB
7	22		31461	31041-221231-120 03
7	23		06481	875754-34
7	24		06481	875754-101
7	25		06481	875754-36
7	26		96906	MS27484T24B24S
7	27		96906	MS27484T24B24P
7	28		31461	31041-241631-140 03
7	29		06481	875754-37
7	30		06481	875754-102

CROSS-REFERENCE INDEXES

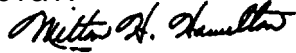
FIG.	ITEM	FIGURE AND ITEM NUMBER INDEX		PART NUMBER
		STOCK NUMBER	CAGEC	
7	31		06481	875754-37
7	32		96906	MS27467T25B19S
	33		96906	MS27467T25B17P
7	34		31461	31041-241631-140 03
7	35		06481	875754-40
7	36		06481	875754-103
7	37		96906	MS3368-4-2D
7	38		96906	MS27484T16B6S
7	39		96906	MS27488-12
7	40		31461	31041-160431-080 03
7	41	5940-00-143-4777	96906	MS25036-157
7	42		06481	875754-42
7	43		81349	M24308/4-5
7	44		06481	875754-104
7	45		06481	875754-44
7	46		96906	MS27484T16B35SC
7	47		96906	MS27488-22
7	48		31461	31041-161231-120 03
7	49		06481	875754-45
7	50		06481	875754-105
7	51		06481	875754-47
7	52		96906	MS27484T14B35SC
7	53		96906	MS27484T16B35PD
7	54		96906	MS27488-22
7	55		31461	31041-161031-120 03
7	56		31461	31041-141031-120 03
7	57		31461	31041-241631-140 03
7	58		06481	875754-48
7	59		06481	875754-106
7	60		96906	MS27484T24B24SB
7	61	5940-00-113-8191	96906	MS25036-127
8	1		06481	877402-7
8	2		98376	ZSP11-1108
8	3		98376	ZSP2-230-2
8	4		98376	ZP20136
8	5	4820-00-898-3003	98376	ZSP6-037-4
8	6	5330-01-126-2587	98376	ZP5055-28
8	7		98376	D41420C12
8	8		98376	D41420C11
8	9		98376	D41420C10
8	10		98376	D41420C7
8	11		98376	D41420C14
8	12		98376	D41420C13
8	13		98376	D41420C15
8	14		98376	D41420C16

CROSS-REFERENCE INDEXES

FIG.	ITEM	FIGURE AND ITEM NUMBER INDEX		PART NUMBER
		STOCK NUMBER	CAGEC	
8	15		08524	FFN6010-10-C
8	16	5330-01-110-9268	98376	ZP20634
9	1		06481	877402-18
9	2		98376	ZSP11-1108
9	3		98376	ZSPZ-230-2
9	4		98376	ZP20136
9	5	4820-00-898-3003	98376	ZSP6-037-4
9	6	5330-01-126-5281	98376	ZP5055-6
9	7		08524	FFN6010-10-C
9	8		98376	D41421C6
9	9		98376	D41421C13-1
9	10		98376	D41421C7
9	11		98376	D41421C16-1
9	12		98376	D41421-105
9	13		98376	D41421C15
9	14		98376	D41421-107
9	15		98376	D41421C12
9	16		98376	D41421C16-3
9	17		98376	D41421C14-1
9	18		98376	D41421C7
9	19		98376	D41421C13
9	20		98376	D41421C8
9	21	5330-01-110-9268	98376	ZP20634
9	22		98376	D41421-109
9	23		98376	D41421C5

By Order of the Secretaries of the Army, and Navy (Including the Marine Corps):

Official:



MILTON H. HAMILTON
Administrative Assistant to the
Secretary of the Army

02036

GORDON R. SULLIVAN
General, United States Army
Chief of Staff

DAVID E. BOTTORFF
Rear Admiral, CEC, US Navy
Commander
Navy Facilities Engineering Command

H. E. REESE
Deputy for Support
Marine Corps Research, Development and
Acquisition Command

DISTRIBUTION:

To be distributed in accordance with DA Form 12-25E, qty rqr block no. 1796.



THEN... JOT DOWN THE DOPE ABOUT IT ON THIS FORM. CAREFULLY TEAR IT OUT. FOLD IT AND DROP IT IN THE MAIL!

SOMETHING WRONG WITH THIS PUBLICATION?

FROM: (PRINT YOUR UNIT'S COMPLETE ADDRESS)
PFC JOHN DOE
COA, 3d ENGINEER BN
FT. LEANBARWOOD, MD 63108
 DATE SENT

PUBLICATION NUMBER TM 5-6675-309-24P	PUBLICATION DATE 22 JULY 1992	PUBLICATION TITLE POWER SUPPLY TEST SET
---	----------------------------------	--

BE EXACT. PIN-POINT WHERE IT IS				IN THIS SPACE TELL WHAT IS WRONG AND WHAT SHOULD BE DONE ABOUT IT:
PAGE NO	PARA-GRAPH	FIGURE NO	TABLE NO	
6	2-1 a			In line 6 of paragraph 2-1a the manual states the engine has <u>6</u> cylinders. The engine on my set only has <u>4</u> cylinders. Change the manual to show <u>4</u> cylinders.
B1		4-3		Callout 16 on figure 4-3 is pointing at a <u>bolt</u> . In key to figure 4-3, item 16 is called a <u>skin</u> - Please correct one or the other.
125	line 20			I ordered a gasket, item 19 on figure B-16 by NSN 2 910-05-762-3001. I got a gasket but it doesn't fit. Supply says I got what I ordered, so the NSN is wrong. Please give me a <u>good NSN</u>

TEAR ALONG PERFORATED LINE

PRINTED NAME, GRADE OR TITLE, AND TELEPHONE NUMBER JOHN DOE, PFC (262) 317.7111	SIGN HERE JOHN DOE
---	------------------------------

TEAR ALONG PERFORATED LINE

FILL IN YOUR
UNIT'S ADDRESS



FOLD BACK

DEPARTMENT OF THE ARMY



OFFICIAL BUSINESS

COMMANDER
U.S. ARMY TROOP SUPPORT COMMAND
ATTN: AMSTR-MMTS
4300 GOODFELLOW BOULEVARD
ST. LOUIS, MO 63120-1798



THEN... JOT DOWN THE DOPE ABOUT IT ON THIS FORM. CAREFULLY TEAR IT OUT. FOLD IT AND DROP IT IN THE MAIL!

SOMETHING WRONG WITH THIS PUBLICATION?

FROM: (PRINT YOUR UNIT'S COMPLETE ADDRESS)

DATE SENT

PUBLICATION NUMBER: TM 5-6675-309-24P
PUBLICATION DATE: 22 JULY 1992
PUBLICATION TITLE: POWER SUPPLY TEST SET

BE EXACT PIN-POINT WHERE IT IS				IN THIS SPACE TELL WHAT IS WRONG AND WHAT SHOULD BE DONE ABOUT IT:
PAGE NO	PARA-GRAPH	FIGURE NO	TABLE NO	

PRINTED NAME, GRADE OR TITLE AND TELEPHONE NUMBER
SIGN HERE

TEAR ALONG PERFORATED LINE

DA FORM 2028-2
1 JUL 79

PREVIOUS EDITIONS ARE OBSOLETE.
DRSTS-M Overprint 2, 1 Nov 88.

P.S.--IF YOUR OUTFIT WANTS TO KNOW ABOUT YOUR RECOMMENDATION MAKE A CARBON COPY OF THIS AND GIVE IT TO YOUR HEADQUARTERS

FILL IN YOUR
UNIT'S ADDRESS



FOLD BACK

DEPARTMENT OF THE ARMY

OFFICIAL BUSINESS

COMMANDER
U.S. ARMY TROOP SUPPORT COMMAND
ATTN: AMSTR-MMTS
4300 GOODFELLOW BOULEVARD
ST. LOUIS, MO 63120-1798

TEAR ALONG PERFORATED LINE

RECOMMENDED CHANGES TO EQUIPMENT TECHNICAL PUBLICATIONS



THEN... JOT DOWN THE DOPE ABOUT IT ON THIS FORM. CAREFULLY TEAR IT OUT. FOLD IT AND DROP IT IN THE MAIL!

SOMETHING WRONG WITH THIS PUBLICATION?

FROM: (PRINT YOUR UNIT'S COMPLETE ADDRESS)

DATE SENT

PUBLICATION NUMBER

TM 5-6675-309-24P

PUBLICATION DATE

22 JULY 1992

PUBLICATION TITLE

POWER SUPPLY TEST SET

BE EXACT PIN-POINT WHERE IT IS

PAGE NO	PARA-GRAPH	FIGURE NO	TABLE NO

IN THIS SPACE TELL WHAT IS WRONG AND WHAT SHOULD BE DONE ABOUT IT:

TEAR ALONG PERFORATED LINE

PRINTED NAME, GRADE OR TITLE AND TELEPHONE NUMBER

SIGN HERE

DA FORM 2028-2
1 JUL 79

PREVIOUS EDITIONS ARE OBSOLETE.
DRST-M Overprint 2, 1 Nov 88.

P.S.--IF YOUR OUTFIT WANTS TO KNOW ABOUT YOUR RECOMMENDATION MAKE A CARBON COPY OF THIS AND GIVE IT TO YOUR HEADQUARTERS.

FILL IN YOUR
UNIT'S ADDRESS



FOLD BACK

DEPARTMENT OF THE ARMY



OFFICIAL BUSINESS

COMMANDER
U.S. ARMY TROOP SUPPORT COMMAND
ATTN: AMSTR-MMTS
4300 GOODFELLOW BOULEVARD
ST. LOUIS, MO 63120-1798

TEAR ALONG PERFORATED LINE

RECOMMENDED CHANGES TO EQUIPMENT TECHNICAL PUBLICATIONS



SOMETHING WRONG WITH THIS PUBLICATION?

THEN... JOT DOWN THE DOPE ABOUT IT ON THIS FORM. CAREFULLY TEAR IT OUT. FOLD IT AND DROP IT IN THE MAIL!

FROM: (PRINT YOUR UNIT'S COMPLETE ADDRESS)

DATE SENT

PUBLICATION NUMBER

TM 5-6675-309-24P

PUBLICATION DATE

22 JULY 1992

PUBLICATION TITLE

POWER SUPPLY TEST SET

BE EXACT PIN-POINT WHERE IT IS

PAGE NO

PARA-GRAPH

FIGURE NO

TABLE NO

IN THIS SPACE TELL WHAT IS WRONG AND WHAT SHOULD BE DONE ABOUT IT:

TEAR ALONG PREPARED LINE

PRINTED NAME, GRADE OR TITLE AND TELEPHONE NUMBER

SIGN HERE

DA FORM 2028-2
1 JUL 79

PREVIOUS EDITIONS ARE OBSOLETE.
DRSTM Overprint 2, 1 Nov 88.

P.S.--IF YOUR OUTFIT WANTS TO KNOW ABOUT YOUR RECOMMENDATION MAKE A CARBON COPY OF THIS AND GIVE IT TO YOUR HEADQUARTERS

FILL IN YOUR
UNIT'S ADDRESS



FOLD BACK

DEPARTMENT OF THE ARMY



OFFICIAL BUSINESS

COMMANDER
U.S. ARMY TROOP SUPPORT COMMAND
ATTN: AMSTR-MMTS
4300 GOODFELLOW BOULEVARD
ST. LOUIS, MO 63120-1798

TEAR ALONG PERFORATED LINE

The Metric System and Equivalents

Linear Measure

1 centimeter = 10 millimeters = .39 inch
 1 decimeter = 10 centimeters = 3.94 inches
 1 meter = 10 decimeters = 39.37 inches
 1 dekameter = 10 meters = 32.8 feet
 1 hectometer = 10 dekameters = 328.08 feet
 1 kilometer = 10 hectometers = 3,280.8 feet

Weights

1 centigram = 10 milligrams = .15 grain
 1 decigram = 10 centigrams = 1.54 grains
 1 gram = 10 decigrams = .035 ounce
 1 dekagram = 10 grams = .35 ounce
 1 hectogram = 10 dekagrams = 3.52 ounces
 1 kilogram = 10 hectograms = 2.2 pounds
 1 quintal = 100 kilograms = 220.46 pounds
 1 metric ton = 10 quintals = 1.1 short tons

Liquid Measure

1 centiliter = 10 milliliters = .34 fl. ounce
 1 deciliter = 10 centiliters = 3.38 fl. ounces
 1 liter = 10 deciliters = 33.81 fl. ounces
 1 dekaliter = 10 liters = 2.64 gallons
 1 hectoliter = 10 dekaliters = 26.42 gallons
 1 kiloliter = 10 hectoliters = 264.18 gallons

Square Measure

1 sq. centimeter = 100 sq. millimeters = .155 sq. inch
 1 sq. decimeter = 100 sq. centimeters = 15.5 sq. inches
 1 sq. meter (centare) = 100 sq. decimeters = 10.76 sq. feet
 1 sq. dekameter (are) = 100 sq. meters = 1,076.4 sq. feet
 1 sq. hectometer (hectare) = 100 sq. dekameters = 2.47 acres
 1 sq. kilometer = 100 sq. hectometers = .386 sq. mile -

Cubic Measure

1 cu. centimeter = 1000 cu. millimeters = .06 cu. inch
 1 cu. decimeter = 1000 cu. centimeters = 61.02 cu. inches
 1 cu. meter = 1000 cu. decimeters = 35.31 cu. feet

Approximate Conversion Factors

To change	To	Multiply by	To change	To	Multiply by
inches	centimeters	2.540	ounce-inches	newton-meters	.007062
feet	meters	.305	centimeters	inches	.394
yards	meters	.914	meters	feet	3.280
miles	kilometers	1.609	meters	yards	1.094
square inches	square centimeters	6.451	kilometers	miles	.621
square feet	square meters	.093	square centimeters	square inches	.155
square yards	square meters	.836	square meters	square feet	10.764
square miles	square kilometers	2.590	square meters	square yards	1.196
acres	square hectometers	.405	square kilometers	square miles	.386
cubic feet	cubic meters	.028	square hectometers	acres	2.471
cubic yards	cubic meters	.765	square meters	cubic feet	35.315
fluid ounces	milliliters	29.573	cubic meters	cubic yards	1.308
pints	liters	.473	cubic meters	fluid ounces	.034
quarts	liters	.946	liters	pints	2.113
gallons	liters	3.785	liters	quarts	1.057
ounces	grams	28.349	liters	gallons	.264
pounds	kilograms	.454	grams	ounces	.035
short tons	metric tons	.907	kilograms	pounds	2.205
pound-feet	newton-meters	1.356	metric tons	short tons	1.102
pound-inches	newton-meters	.11296			

Temperature (Exact)

°F	Fahrenheit temperature	5/9 (after subtracting 32)	Celsius temperature	°C
----	------------------------	----------------------------	---------------------	----

